



DSU IV ESP

Data Service Unit with Embedded SNMP

USER MANUAL

Part Number

1204011L1

1204001L1

1204002L1

1204004L1

1204005L1

Version

DSU IV ESP

ESP 4-wire Switched 56 DBU Card

ESP V.34 DBU Card

ESP ISDN DBU Card

ESP Ethernet Card

Trademark Information:

Hayes is a registered trademark of Hayes Microcomputer Products, Inc.

Openview is a registered trademark of Hewlett-Packard Company.

SunNet Manager is a registered trademark of Sun Microsystems, Inc.

Netview is a registered trademark of IBM.



901 Explorer Boulevard
P.O. Box 140000
Huntsville, AL 35814-4000
Phone: (205) 963-8000

© 1997 ADTRAN, Inc.
All rights reserved.
Printed in USA.

ABOUT THIS MANUAL

This manual is arranged so you can quickly and easily find the information you need. The following is an overview of the contents of this manual:

- Chapter 1, Introduction, familiarizes you with DDS, Switched 56, SNMP, and TELNET. This chapter also includes DSU IV highlights and describes the options that may be purchased for use with the DSU.
- Chapter 2, Installation, describes the DSU connectors (pin assignments are given in Appendix A) and provides an installation diagram.
- Chapter 3, Operation, explains how to operate your DSU using either the front panel or a VT 100 terminal interface.
- Chapter 4, Applications, provides examples of some common DSU applications, including network diagrams.
- Chapter 5, Configuration Overview, explains how to access the DSU configuration menu, including information on the different configuration methods. This chapter also provides a front panel menu tree.
- Chapters 6 through 11 provide brief explanations for selections made in the Configuration menus. These chapters are based on the front panel menu branches of the Configuration menu: Network Options, DTE Options, Test Options, Dial Options, Management, and Utilities.
- Chapter 12, Testing and Troubleshooting, describes the testing options available with the DSU IV and gives troubleshooting information.
- Chapter 13, Activating Dial Functions, describes the Dial options available from the Main menu.
- Chapter 14, Viewing Status Information, provides information on the status menus available for the base unit as well as the DBU cards.
- Appendix A provides pinouts for the connectors of the DSU and the DBU and Ethernet cards.
- Appendix B shows the AT commands available for the DSU.
- Appendix C describes the terminal menu interface (accessed through a VT 100 terminal or a TELNET session).

- Appendix D provides information on the unit's configuration profiles.
- Appendix E contains a DSU to modem interconnect diagram for a modem tail circuit application.
- Appendix F contains product specifications.



Notes provide additional useful information.



Cautions signify information that could prevent service interruption.



Warnings provide information that could prevent damage to the equipment or endangerment to human life.

FCC regulations require that the following information be provided in this manual:

1. This equipment complies with Part 68 of the FCC rules. On the bottom of the equipment housing is a label that shows the FCC registration number and ringer equivalence number (REN) for this equipment. If requested, provide this information to the telephone company.
2. If this equipment causes harm to the telephone network, the telephone company may temporarily discontinue service. If possible, advance notification is given; otherwise, notification is given as soon as possible. The telephone company will advise the customer of the right to file a complaint with the FCC.
3. The telephone company may make changes in its facilities, equipment, operations, or procedures that could affect the proper operation of this equipment; advance notification and the opportunity to maintain uninterrupted service are given.
4. If experiencing difficulty with this equipment, please contact ADTRAN for repair and warranty information. The telephone company may require this equipment to be disconnected from the network until the problem is corrected, or it is certain the equipment is not malfunctioning.
5. This unit contains no user-serviceable parts.
6. An FCC compliant telephone cord with a modular plug is provided with this equipment. In addition, an FCC compliant cable appropriate for the dial backup option ordered is provided with this equipment. This equipment is designed to be connected to the telephone network or premises wiring using an FCC compatible modular jack, which is Part 68 compliant.
7. The following information may be required when applying to the local telephone company for leased line facilities:

Service Type	Digital Facility Interface Code	Service Order Code	Network Jacks
2.4 kbps Digital Interface	04DU5-24	6.0F	RJ-48S
4.8 kbps Digital Interface	04DU5-48	6.0F	RJ-48S
9.6 kbps Digital Interface	04DU5-96	6.0F	RJ-48S
19.2 kbps Digital Interface	04DU5-19	6.0F	RJ-48S
38.4 kbps Digital Interface	04DU5-38	6.0F	RJ-48S
56 kbps Digital Interface	04DU5-56	6.0F	RJ-48S
64 kbps Digital Interface	04DU5-64	6.0F	RJ-48S

8. The following information may be required when applying to the local telephone company for a dial-up line for the V.34:

Service Type	REN	FIC	USOC
Loop Start (V.34)	0.8B/0.4A	02LS2	RJ-11C

9. The REN is useful in determining the quantity of devices you may connect to your telephone line and still have all of those devices ring when your number is called. In most areas, the sum of the RENs of all devices should not exceed five. To be certain of the number of devices you may connect to your line as determined by the REN, call your telephone company to determine the maximum REN for your calling area.
10. This equipment may not be used on coin service provided by the telephone company. Connection to party lines is subject to state tariffs. (Contact your state public utility commission or corporation commission for information.)

**FEDERAL COMMUNICATIONS COMMISSION
RADIO FREQUENCY INTERFERENCE STATEMENT**

This equipment has been tested and found to comply with the limits for a Class A digital device, pursuant to Part 15 of the FCC rules. These limits are designed to provide reasonable protection against harmful interference when the equipment is operated in a commercial environment. This equipment generates, uses, and can radiate radio frequency energy and, if not installed and used in accordance with the instruction manual, may cause harmful interference to radio frequencies. Operation of this equipment in a residential area is likely to cause harmful interference in which case the user will be required to correct the interference at his own expense.

Shielded cables must be used with this unit to ensure compliance with Class A FCC limits.

WARNING

Change or modifications to this unit not expressly approved by the party responsible for compliance could void the user's authority to operate the equipment.

CANADIAN EMISSIONS REQUIREMENTS

This digital apparatus does not exceed the Class A limits for radio noise emissions from digital apparatus as set out in the interference-causing equipment standard entitled "Digital Apparatus," ICES-003 of the Department of Communications.

Cet appareil numérique respecte les limites de bruits radioélectriques applicables aux appareils numériques de Class A prescrites dans la norme sur le matériel brouilleur: "Appareils Numériques," NMB-003 édictée par le ministre des Communications.

CANADIAN EQUIPMENT LIMITATIONS

Notice: The Canadian Industry and Science Canada label identifies certified equipment. This certification means that the equipment meets certain telecommunications network protective, operational, and safety requirements. The Department does not guarantee the equipment will operate to the user's satisfaction.

Before installing this equipment, users should ensure that it is permissible to be connected to the facilities of the local telecommunications company. The equipment must also be installed using an acceptable method of connection. In some cases, the company's inside wiring associated with a single line individual service may be extended by means of a certified connector assembly (telephone extension cord). The customer should be aware that compliance with the above conditions may not prevent degradation of service in some situations.

Repairs to certified equipment should be made by an authorized Canadian maintenance facility designated by the supplier. Any repairs or alterations made by the user to this equipment, or equipment malfunctions, may give the telecommunications company cause to request the user to disconnect the equipment.

Users should ensure for their own protection that the electrical ground connections of the power utility, telephone lines and internal metallic water pipe system, if present, are connected together. This precaution may be particularly important in rural areas.

Caution: Users should not attempt to make such connections themselves, but should contact the appropriate electric inspection authority, or an electrician, as appropriate.

The Load Number (LN) assigned to each terminal device denotes the percentage of the total load to be connected to a telephone loop which is used by the device, to prevent overloading. The termination on a loop may consist of any combination of devices subject only to the requirement that the total of the Load Numbers of all devices does not exceed 100.

ISDN Service Ordering Information for the ADTRAN DSU IV ESP With ISDN Dial Backup

For ADTRAN DSU IV ESP ISDN applications, the following guide can be used as an aid in ordering basic ISDN service from your local telephone company. The ADTRAN DSU IV ESP ISDN includes NT1 and Terminal adapter functionality and supports data rates up to 64 kbps.

Request an ISDN Basic Rate Interface (BRI) line with the following features:

U-interface reference point

2B1Q line coding

1B+D Service (supports up to 64 kbps)

The DSU IV ESP ISDN supports the following switch types and software protocols:

AT&T 5ESS Custom, 5E6 and later software, National ISDN-1

NT1 DMS-100 BCS-32 and later software (Pvc1), National ISDN-1 (Pvc2)

Siemens EWSD National ISDN-1

Request that the ISDN line allocate one DYNAMIC Terminal Endpoint Identifier (TEI) for the number.

For service offered from an AT&T 5ESS, request a point-to-point line with the following features:

Feature: *Value*

B1 Service: *On Demand (DMD)*

Data Line Class: *Point-to-Point*

Maximum B Channels: *1 (1B+D)*

Circuit Switched Data (CSD) Bearer Channels: *Any*

Number of CSD Calls: *1 (1B+D)*

Terminal Type: *Type A*

Turn the Following Features Off:

Packet Mode Data
Multi-line Hunt
Multiple Call Appearances
Electronic Key Telephone Sets (EKTS)
Shared Dictionary Numbers
Accept Special Type of Number
Intercom Groups
Network Resource Selector (Modem Pools)
Message Waiting
Hunting
InterLata Competition

For service offered from a Northern Telecom DMS-100, request a Point-to-Point Multi-Point line with the following features:

Line Type: *Basic Rate, Functional*
Electronic Key Telephone Sets (EKTS): *No*
Call Appearance Handling (CACH): *No*
Non-Initializing Terminal: *No*
Circuit Switched Service: *Yes*
Packet Switched Service: *No*
TEI: *Dynamic*
Bearer Service: *Circuit Switched voice and data permitted on any B channel (packet mode data not permitted)*

Table of Contents

Chapter 1. Introduction

Product Overview	1
DDS Operation	3
Switched 56 Operation	4
SNMP	4
Network Manager	4
Agent	4
MIB	4
TELNET	5
Dial Backup Operation	5
ESP Dial Backup Options	5
4-Wire Switched 56 Card	5
V.34 Card	6
ISDN Card	6
Warranty and Customer Service	6

Chapter 2. Installation

Unpack, Inspect, Power Up	7
Receipt Inspection	7
ADTRAN Shipments Include	7
Customer Provides	8
Power Up	8
Rear Panel	9
DBU and Ethernet Card Slots	10
Telco Connector	10
Network Interface Connection	10
EIA-232 and V.35 Connectors	10
DTE Data Connection/Primary DTE	10
Control Port	11

Chapter 3. Operation

Front Panel	13
LCD Window	13
Enter	13
Keypad	13
Shift	13

Cancel	14
Up and Down Arrows	14
LED Descriptions	14
Front Panel Menu Navigation	17
Front Panel Menu Structure	18
Main Menu	18
Status	18
Test	18
Configuration	19
Dial	19
VT 100 Terminal Connection and Operation	20

Chapter 4. Applications

LAN Application with SNMP/TELNET Management	23
Minimum Configuration Requirements for SNMP/TELNET Access	24
Interface	24
IP Address	24
Subnet Mask	24
Gateway IP Address (if required)	24
Special Features of this Application	24
Dial Backup Application	26
Entering Dial Backup Mode	26
Operation During Critical Times	26
Loss of Sealing Current	26
Out of Service (OOS) Signal	26
No Receive Signal	27
All 1s or all 0s Condition	27
Answer Always	27
Operation During Noncritical Times	27
Weekend and Time of Day Lockout	27
Conditions for Returning to the DDS Circuit	27

Chapter 5. Configuration Overview

Configuration Methods	29
AT Commands	33
V.25 bis Commands	34
SDLC Option	34
Character Format	34
Command Structure	34
Bi-Sync Option	34

Character Format	34
Command Structure	34
Asynchronous Option	35
Character Format	35
Command Structure	35
Command Descriptions	35
Syntax and Possible Responses	36
CNL (Configuration Local)	36
CNR (Configuration Remote)	36
Chapter 6. Configuring Network Options	
Network Options	37
Loop Rate	39
Network Address	40
Remote Configuration	40
Network Type	40
Clock Source	40
Chapter 7. Configuring DTE Option	
DTE Options	41
DTE Rate	45
Connector Type	46
Data Format	46
DTE Command Option	46
Transmit Clock	46
Clear to Send (CS) Options	47
Anti-Stream	47
CD Options	48
Data Terminal Ready (TR) Options	48
Data Set Ready (SR) Options	48
Chapter 8. Configuring Test Options	
Test Options	49
Test Timeout	50
Remote Digital Loopback (RDL)	50
EIA LLB	51
EIA RLB	51
DBU Answer Test	51

Chapter 9. Configuring Dial Options

Dial Options	53
Phone Numbers	55
ISDN Dial Backup	55
Setting the Service Profile Identifier (SPID)	55
Setting the Local Directory (LOC) Number	55
SW56 Auto Answer	56
DBU Options	56
Standard DBU Options	56
Automatic DBU	56
Number to Dial	56
Originate/ Answer	56
DBU Criteria	57
When Out of Service (OOS)	57
No Receive (RX) Signal	57
No Sealing Current	57
When all 1s/0s	57
Answer Always	57
Weekend Lockout	57
Daily Lockout	57
Lockout Start	58
Lockout End	58
Auto Restore	58
Redial Counter	58
Fail Timer	59
Wait to Redial	59
DBU Options for S4W Card	62
Network Type	62
DBU Options for V.34 Card	62
Error Control	62
Flow Control	62
Compression	62
DBU Options for ISDN Card	64
Switch Type	64
DBU Passcode	64

Chapter 10. Configuring Management Functions

Interface	66
Control Rate	66
IP Options	66
Unit IP Address	66

Subnet Mask.....	66
Gateway IP Address	66
IP Security	66
IP Filter Address	66
SNMP Options	67
Get Community	67
Set Community	67
Trap Community	67
SNMP Traps	67
Trap IP Address	67
System Name, Contact, and Location	68
Authentication Traps	68
TELNET Options	68
TELNET Password	68
TELNET Timeout	68
Entering Letters Using the Front Panel	69
Chapter 11. Configuring Unit Utilities	71
Manual Command	72
Time/Date	74
Software Revision	74
LAN MAC Address	74
Serial Number	74
Chapter 12. Testing and Troubleshooting	
Test Overview	75
Initiating a Test	76
Test Status Display	77
Exiting a Test	77
Troubleshooting	79
Messages from the DSU/CSU	79
Troubleshooting New Installs	80
Test Sequence for Troubleshooting New Installs or Existing Circuits	81
Local Unit Diagnostics	82
DTE & Loop (LL)	84
Loop Only (RT)	85
DTE Only	86
DTE With Test Pattern	87
Test Pattern	89
Self Test	90

Remote Unit Diagnostics	91
DBU Connection	93
Chapter 13. Activating Dial Functions	
Dial Options	95
Answer Unit Connected to DDS Line	96
Dial Backup	96
Originate Unit Connected to DDS Line	96
Dial Backup	96
Stay on Leased	96
DBU Online Test	97
Dial Options During Dial Backup	97
Hang Up	97
Stay On Line	97
Chapter 14. Viewing Status Information	
Status	99
Network Rate, DTE Rate, and Data Format	99
Dial Backup Information	100
Type of Dial Backup Service	100
Current Status of Dial Backup Mode	100
DSU Operation and Network Status	102
Current DSU IV ESP Status	102
Current DDS Network Status	102
DTE Control Leads and Status	103
Appendix A. Pinouts	105
Appendix B. AT Commands	111
Appendix C. Terminal Menu Structure	113
Appendix D. Configuration Profiles	129
Appendix E. DSU to Modem Interconnect	133
Appendix F. Specifications Summary	135
Glossary	139
Index	147

List of Tables

Table 6-A	Network Options AT Commands	38
Table 7-A	DTE Options AT Commands	43
Table 7-B	Short and Long Delays at Different Operating Speeds	47
Table 8-A	Test Options AT Commands	50
Table 9-A	AT Commands for Storing Phone Numbers	55
Table 9-B	DBU Options AT Commands for All Models	60
Table 9-C	DBU Options AT Commands for V.34 Card	63
Table 11-A	Manual Commands	73
Table 12-A	Messages from the DSU/CSU	79
Table 12-B	Troubleshooting New Installs	80
Table 12-C	Test AT Commands	82
Table 12-D	DTE With Test Pattern Commands	83
Table 12-E	Remote Tests and AT Commands	91
Table A-A	Pin Assignments for Telco Connector	106
Table A-B	Pin Assignments for ESP DBU Card Connectors	106
Table A-C	Pin Assignments for Primary EIA-232 Connector	107
Table A-D	Pin Assignments for Primary V.35 Connector	108
Table A-E	Pin Assignments for Control Connector	108
Table A-F	Pin Assignments for 10baseT Connector	109
Table B-A	AT Commands	111
Table C-A	Terminal Main Menu Dial Selection	114
Table D-A	Configuration Profiles	130

List of Figures

Figure 1-1	Typical Point-to-Point Application for DSU IV ESP	3
Figure 2-1	DSU IV ESP Rear View	9
Figure 3-1	DSU IV ESP Front Panel	15
Figure 3-2	Example of Basic Menu Navigation	17
Figure 3-3	Terminal Interface Main Menu (SW56 Mode)	21
Figure 4-1	SLIP/PPP LAN Application with SNMP/TELNET Management	25
Figure 4-2	Ethernet LAN Application with SNMP/TELNET Management	25
Figure 4-3	Dial Backup Application	28
Figure 5-1	Front Panel Configuration Menu Tree	31
Figure 6-1	Network Options Menu Tree	39
Figure 7-1	DTE Options Menu Tree	42
Figure 8-1	Test Options Menu Tree	49
Figure 9-1	Dial Options Configuration Menu Tree	54
Figure 10-1	Management Menu Tree	65
Figure 11-1	Utilities Menu Tree	71

Figure 12-1 Normal Operation Before Initiating Loopback Test	75
Figure 12-2 Initiating a Test	76
Figure 12-3 Sample Test Status Displays	77
Figure 12-4 Complete Test Menu	78
Figure 12-5 DTE & Loop Test	84
Figure 12-6 Loop Only Test	85
Figure 12-7 DTE Only Test Diagram	86
Figure 12-8 DTE with Test Pattern	87
Figure 12-9 Test Pattern Only	89
Figure 12-10 V.54 RDL with Test Pattern	91
Figure 12-11 Initiating a Remote Test	92
Figure 12-12 DBU Connection Test	93
Figure 12-13 Initiating a DBU Connection Test	94
Figure 13-1 Dial Options Menu (SW56)	95
Figure 13-2 Dial Options Menu (Dedicated)	96
Figure 14-1 Status Display	99
Figure C-1 Terminal Interface Main Menu	114
Figure C-2 Terminal Menu Tree	115
Figure C-3 Status Menu	117
Figure C-4 Remote Configuration Options	118
Figure C-5 Main Configuration Menu	119
Figure C-6 DSU Configuration Menu	120
Figure C-7 S4W Dial Backup	121
Figure C-8 Management Menu	122
Figure C-9 SNMP Management Menu	123
Figure C-10 Utility Menu	124
Figure C-11 Local Test Options Menu	125
Figure C-12 Remote Test Options Menu	126
Figure C-13 SW56 Dialing Menu	127
Figure C-14 Dial ESP DBU Menu	128
Figure E-1 DSU to Modem Interconnect	133

Chapter 1

Introduction

PRODUCT OVERVIEW

The ADTRAN DSU IV ESP (data service unit with embedded SNMP) provides a reliable, high speed data connection for customer data terminal equipment (DTE) through digital data service (DDS) lines. The DSU IV ESP has an embedded SNMP (simple network management protocol) agent that provides complete SNMP access to the unit through an integral SLIP or PPP async port. The DSU IV ESP's unique modular approach provides optional 10baseT ethernet access for SNMP. Also, optional modular ESP DBU cards provide automatic or manual dial backup for the dedicated circuit.

The following are features of the DSU IV:

- DDS rates supported from 2.4 to 64 kbps including 19.2 and 38.4
- 4-wire Switched 56 (SW56) operation
- Embedded SNMP and TELNET
- Control port provides SLIP and Async PPP access to SNMP or VT 100 terminal configuration
- Two ESP option slots
- 10baseT ethernet SNMP port available with ESP ethernet Card
- Automatic or manual DBU
- DBU available with ESP DBU cards; options include 4-wire Switched 56, V.34, and ISDN
- Time of day and weekend DBU lockout options

The DSU IV ESP provides both V.35 and EIA-232 electrical and physical DTE interfaces to accommodate a variety of applications.

To ensure a reliable connection, the unit features an extended receiver capability which permits operation over long loops (3.4 miles or 5.5 km of 26 AWG at 56 kbps).

The ESP 4-wire SW56 DBU card and the base unit's integrated SW56 capabilities are compatible with AT&T Accunet and Sprint SW56 type services. The V.34 DBU card allows switched backup over the public switched telephone network (PSTN). The ESP ISDN 1B+D card is compatible with National ISDN and supports a U- interface to the Basic Rate ISDN.

Figure 1-1 shows a typical point-to-point application for the DSU IV ESP.

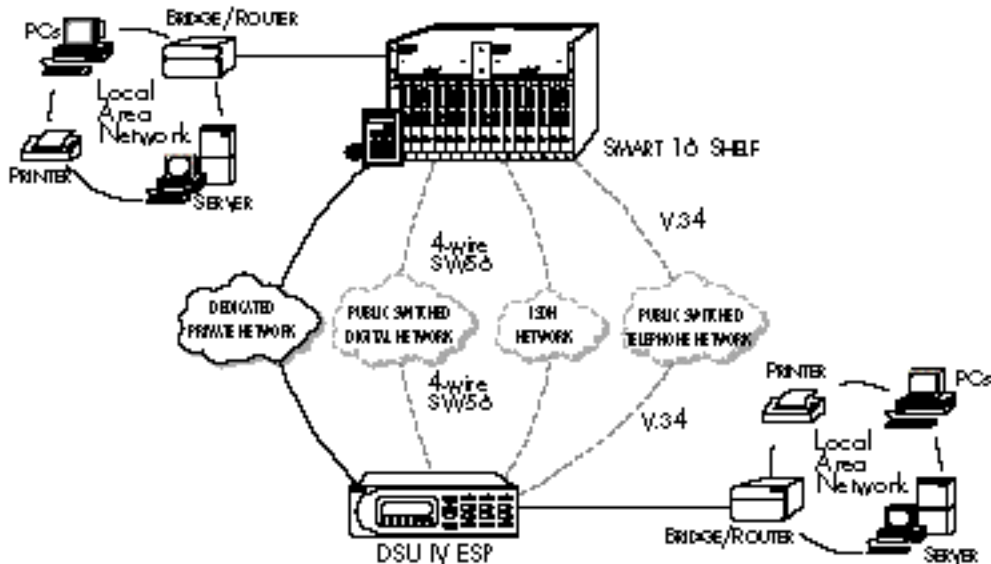


Figure 1-1
Typical Point-to-Point Application for DSU IV ESP

DDS OPERATION

DDS is a nationwide service that allows interconnection and transport of data at speeds up to 64 kbps. The local exchange carriers provide the local loop service to DDS customers and may provide data for routing Inter-LATA to an interexchange carrier. In DDS mode, the DSU IV ESP supports 2.4 to 64 kbps DDS service rates yielding DTE rates of 2.4, 4.8, 9.6, 19.2, 38.4 (sync or async), 56 kbps, and 64 kbps. An additional rate of 57.6 is available in asynchronous mode. The unit can be configured to run slower DTE rates (async or sync) over the 56 or 64 kbps service.

SWITCHED 56 OPERATION

This dial-up, 4-wire Switched 56 DDS allows customers to pay for data connection only for the time the unit is active. The regional operating companies provide the 4-wire local loop service to SW56 customers. The DSU IV ESP supports DTE rates of 2.4, 4.8, 9.6, 19.2, 38.4, and 56 kbps (synchronous) and 2.4, 4.8, 9.6, 19.2, 38.4, and 57.6 kbps (asynchronous).

SNMP

The term SNMP broadly refers to the message protocols used to exchange information between the network and the managed devices, as well as to the structure of network management data bases. SNMP has three basic components:

Network Manager

Control program that collects, controls, and presents data pertinent to the operation of the network devices. It resides on a network management station.

Agent

Control program that resides in each network device connected. This program responds to queries and commands from the network manager and returns requested information or invokes configuration changes initiated by the manager.

MIB

Index to the organized data within a network device. It defines the operation parameters that can be controlled or monitored.

The DSU IV supports the MIB-II standard, RFC 1213, and ADTRAN Enterprise Specific MIB. MIB files are available from ADTRAN in the support section of the ADTRAN Web page at www.adtran.com.

The DSU IV's embedded SNMP feature allows the unit to be accessed and controlled by a network manager through either a device running SLIP or async PPP protocol (connected to the CONTROL port of the DSU) or through a LAN. LAN connection

requires the optional ESP ethernet card (part number 1204005L1). This card provides a 10baseT ethernet interface to the LAN.

TELNET

TELNET provides a password-protected, remote login facility to the DSU IV. TELNET allows a user on a network manager to control the DSU IV through the terminal menus. See the chapter *Applications* and the appendix *Terminal Menu Structure* for more information.

DIAL BACKUP OPERATION

The DSU IV ESP's unique DBU cards are field-installable by the customer. See the chapter *Installation* for information on installing DBU cards. All DBU cards are compatible with other ADTRAN ESP products supporting DBU (see the following note). The three backup options are described in the following sections. Contact the local telco provider to determine which services are available in your area. See the chapter *Applications* for more information, including an example of a dial backup application.



The ESP V.34 DBU is not compatible with the TSU ESP.

ESP Dial Backup Options

4-Wire Switched 56 Card

This dial-up 4-wire SW56 card allows customers to pay for data connection only for the time the unit is active. The regional operating companies provide the 4-wire local loop service to SW56 customers. This card supports DTE rates of 2.4, 4.8, 9.6, 19.2, 38.4 (asynchronous or synchronous), and 56 kbps (synchronous). An additional DTE rate of 57.6 kbps is available in async modes.

V.34 Card

The V.34 card has all of a V.32 bis modem's modes of operation, plus V.34 and V.FC modes. This allows the V.34 option to run synchronous rates up to 33.6 kbps as opposed to the V.32 at 14.4 kbps. In asynchronous mode the throughput at 57.6 kbps is less dependent on data types.

ISDN Card

1B+D Basic Rate ISDN service provides the customer with a switched 56/64 kbps circuit. In addition to 56 and 64 kbps synchronous DTE rates, the card also supports synchronous and asynchronous DTE rates of 2.4, 4.8, 9.6, 19.2, and 38.4 kbps per CCITT V.120. The card also supports the DTE rate of 57.6 kbps async and is compatible with the 4-wire SW56 DBU card.

WARRANTY AND CUSTOMER SERVICE

ADTRAN will replace or repair this product within five years from the date of shipment if it does not meet its published specifications or fails while in service. For detailed warranty, repair and return information refer to the ADTRAN Equipment Warranty and Repair and Return Policy Procedure.

Return Material Authorization (RMA) is required prior to returning equipment to ADTRAN.

For service, RMA requests, or further information, contact one of the numbers listed on the inside back cover of this manual.

Chapter 2

Installation

UNPACK, INSPECT, POWER UP

Receipt Inspection

Carefully inspect the DSU IV ESP for any shipping damage. If damage is suspected, file a claim immediately with the carrier and contact ADTRAN Customer Service. If possible, keep the original shipping container for use in shipping the DSU IV ESP for repair or for verification of damage during shipment.

ADTRAN Shipments Include

The following items are included in ADTRAN shipments of the DSU IV ESP:

- DSU IV ESP unit
- The user manual
- An 8-position modular to 8-position modular cable
- An 8-position modular to 8-position modular cable and a modular to female DB-25 adapter for access to the Control/SLIP/PPP port



The ADTRAN DSU IV ESP MIB is available from ADTRAN in the support section of the ADTRAN Web page at www.adtran.com.

The following items are included in ADTRAN shipments of ESP DBU cards:

- ESP DBU card
- An 8-position modular to 8-position modular cable for the 4-wire SW56 and 1B+D ISDN dial backup options. An 8-position modular to 4-position modular cable for the V.34 backup option.

Customer Provides

The customer must provide either a male EIA-232 (standard 25-pin, D-type) or a male V.35 interface cable.

For SNMP management, the customer must provide access to the DSU IV ESP either through a SLIP port, Async PPP port (requires a male 25-pin D-type connector), or a 10baseT ethernet port (requires that an ADTRAN ESP Ethernet card be installed in the DSU IV ESP). See the appendix *Pinouts* for the pin assignments of the control port (for SLIP and Async PPP) and the ethernet port.

Power Up

The DSU IV ESP is provided with a captive 8-foot power cord, terminated by a three-prong plug which connects to a grounded 115 VAC power receptacle.



Power to the DSU must be provided from a grounded 115 VAC, 60 Hz receptacle.

REAR PANEL

The rear panel contains two DTE connectors which provide primary channel V.35 or EIA-232. An 8-pin telco jack, a control port, a captive power cord, and a power switch are also located on the rear panel. Pin assignments for these connectors are listed in the appendix *Pinouts*. The DSU IV ESP rear panel is shown in Figure 2-1 with optional ESP cards installed.

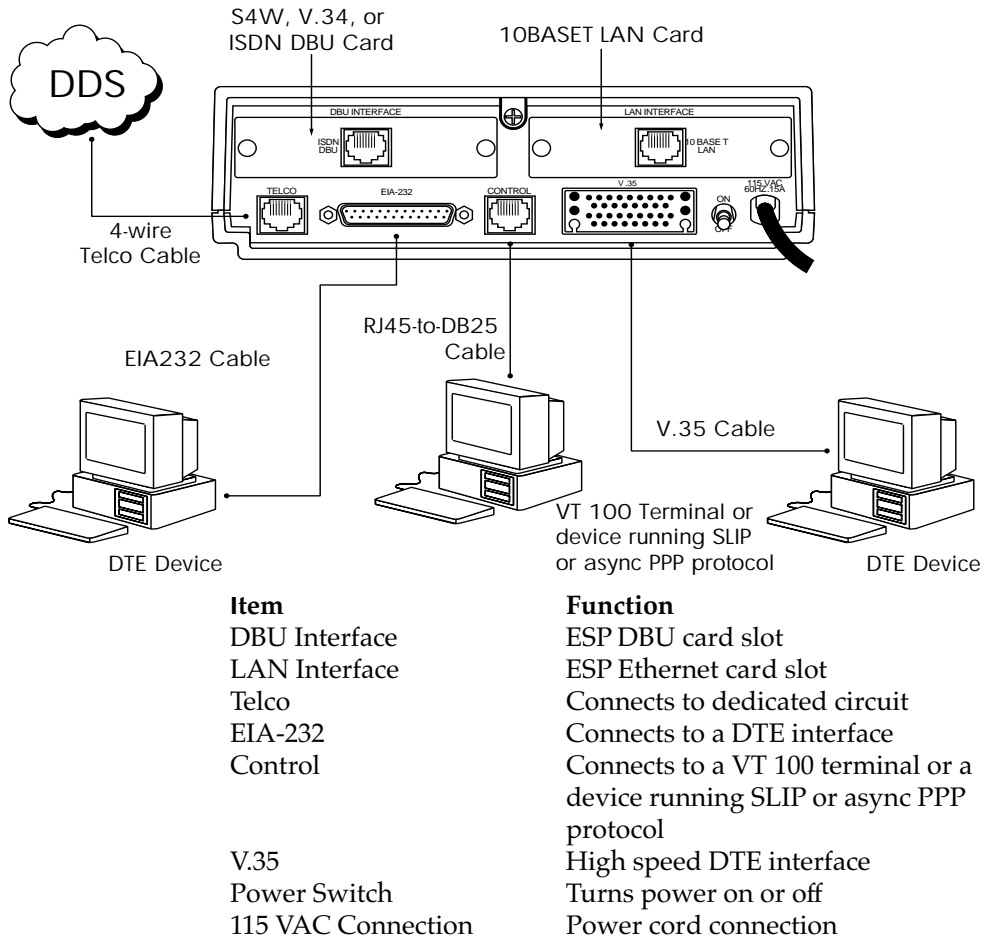


Figure 2-1
DSU IV ESP Rear View

DBU and Ethernet Card Slots

The DSU IV ESP rear panel has two card slots for the installation of dial backup and ethernet cards. To insert cards, perform the following procedure:

1. Remove power from the DSU IV ESP.
2. Slide the card into the corresponding rear slot until the card panel is flush with the DSU IV chassis.
3. Push card locks in (until they click) to secure the card and ensure proper installation.



Card slots are keyed to prevent improper installation (i.e., putting a DBU card into the ethernet slot).



Remove power from the unit prior to installing or removing ESP option cards.

Telco Connector: Network Interface Connection

The DSU IV ESP has an 8-position modular jack labeled **TELCO**. The telco connector is used for connecting to the DDS network. The pinout for this connector is listed in the appendix *Pinouts*.

Each ESP DBU card has a connector which is used for connection to the switched backup network. The pinout for the connector depends on the card type. Pinouts for 4-wire Switched 56, V.34, and ISDN 1B+D DBU options are shown in the appendix *Pinouts*.

EIA-232 and V.35 Connectors: DTE Data Connection/Primary DTE

The primary DTE should be connected to either the EIA-232 DTE connector or the V.35 DTE connector. The maximum cable lengths recommended are 50 feet for the EIA-232, and 100 feet for the V.35. The pin assignments for the connectors are listed in the appendix *Pinouts*.

The V.35 connector is recommended for use with data rates above 19.2 kbps. The EIA-232 connector works up to 56 kbps with a low capacitance cable or with the external transmit clock option selected. The primary DTE rate is configured from the front panel. The primary DTE equipment can operate in asynchronous or synchronous modes.



To prevent possible radio frequency interference emissions, a shielded cable is required.

Control Port

The DSU IV has an 8-position modular jack labeled **CONTROL**. The control port provides connection to a VT 100 EIA-232 compatible interface, a device running SLIP protocol, or a device running Async PPP protocol. An 8-foot adapter connector and cable provide a standard DB-25 EIA-232 interface. See the appendix *Pinouts* for the control port's pin assignments. A description of the operation of this port is covered in the *Operation* chapter.

The control port also functions as the SLIP or Async PPP port when configured for SNMP management. The pinouts are identical when operating in an SNMP management mode.

Chapter 3

Operation

FRONT PANEL

The DSU IV ESP faceplate is shown in Figure 3-1. Descriptions of each part of the front panel follow.

LCD Window

Displays menu items and messages in 2 lines by 16 characters.

Enter

Selects active menu items. To select a menu item, press the number of the item. The menu item flashes, indicating it is activated. Press **Enter** to select the menu item.

Keypad

The keypad contains dual-function keys numbered 0 through 9 with alpha characters A through F. These keys are used to activate menu items and enter information.

Shift

Enter alpha characters by pressing and releasing **Shift** *before* pressing the key representing the desired character. To activate a menu item designated by an alpha character rather than a number press **Shift** and then the letter. The menu item flashes, indicating which parameter is activated. Press **Enter** to select the item.

If a key is pressed without using **Shift**, the numbered item becomes active instead of the alpha item.

Cancel

Pressing the **Cancel** key stops the current activity and returns to the previous menu. Repeat until the desired menu level is reached. When a submenu item is displayed, press **Cancel** to exit the current display and return to the previous menu.

Up and Down Arrows

Up and **Down Arrows** scroll through the submenu items available in the current menu.

LED Descriptions

The DSU IV ESP has seven LED indicators: RS, CS, TD, RD, CD, ALM, and TST. These LEDs are identified as follows:

RS: Request to Send	Reflects the status of the request to send pin of the DTE interface.
CS: Clear to Send	Reflects the status of the clear to send pin of the DTE interface.
TD: Transmit Data	This LED is active when data is transmitted from the DTE.
RD: Receive Data	This LED is active when data is received from the network.
CD: Carrier Detect	This LED is active when frame synchronization is achieved and the DSU IV ESP is ready to transfer data.
ALM: Alarm Indication	This LED activates whenever an alarm condition exists. Alarm conditions include: <ul style="list-style-type: none">• Open loop on network• No frame synchronization• Unit in dial backup• Problem on dial backup line
TST: Test Mode	This LED is on whenever the unit is in test mode.

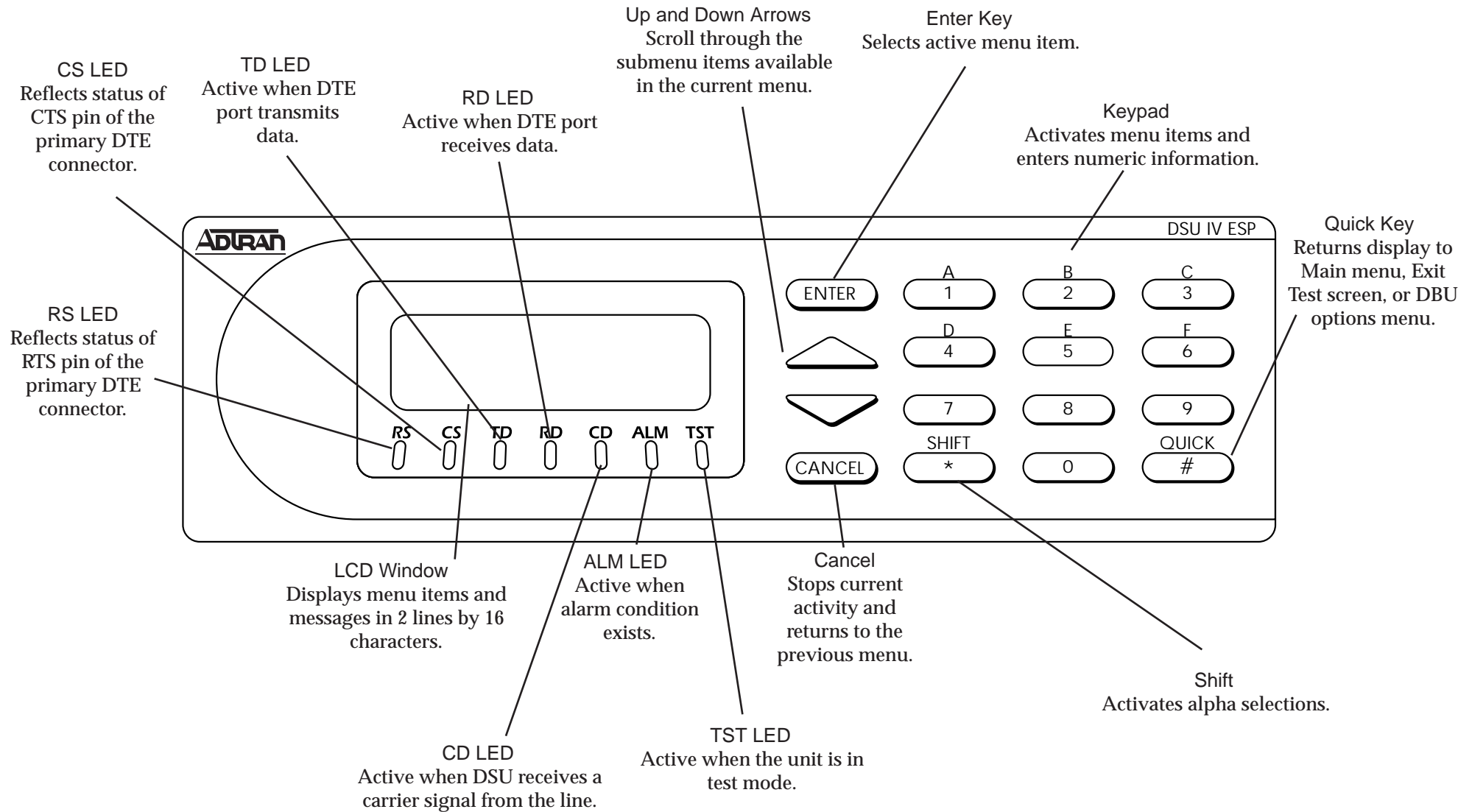


Figure 3-1
DSU IV ESP Front Panel

Front Panel Menu Navigation

To choose a menu item, press the corresponding number or alpha character on the keypad. Press **Shift** to activate menu items with alpha selections. The flashing menu item indicates which selection is activated. Press **Enter** to select the item. The following steps and Figure 3-2 illustrate how to select DSU IV ESP options:

1. Activate Configuration (CONFIG) by pressing **3**. The activated menu item will flash. Press **Enter**.
2. Select LOCAL or REMOTE configuration by pressing the corresponding number, then press **Enter**.
3. Use the arrow keys to view submenu items.
4. Choose an item on the submenu such as Network Options (NETWORK OPT).
5. Activate NETWORK OPT by pressing **1**. Press **Enter**.
6. Activate LOOP RATE options by pressing **1**. Press **Enter**.
7. Press the number corresponding to the desired loop rate. Press **Enter**.

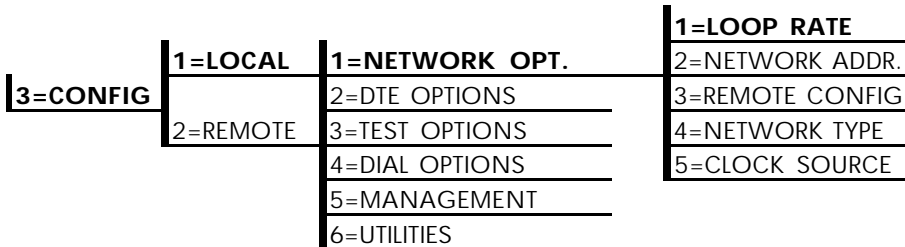


Figure 3-2
Example of Basic Menu Navigation

Front Panel Menu Structure

The DSU IV ESP uses a multilevel menu approach to access its many features. All menu operations are displayed in the LCD window or the terminal. See Figure 3-3 for the terminal Main menu.

The opening menu is the access point to all other operations. Each Main menu item has several functions and submenus to identify and access specific parameters.

Front panel LCD display of the Main menu:

1=STATUS	2=TEST
3=CONFIG	4=DIAL



The Dial selection in the Main menu is only available when a SW56 network type is selected or when a DBU card is installed in the rear of the DSU IV ESP.

Main Menu

The branches of the front panel Main menu are divided into options for Status, Test, Configuration (CONFIG), and Dial.

Status

Status menus display all relevant information for the network and DTE interfaces. The system returns to the status display when idle. For more information see the chapter *Viewing Status Information*.

Test

Use Test menus to control local and remote testing. Select local or remote testing, and the type of test and test pattern when required. For more information, see the chapter *Testing and Troubleshooting*.

Configuration

Use Configuration menus to select network and DTE operating parameters, configure testing and dialing options, select management functions, and configure unit utilities. This menu branch is divided into several chapters for easier reference. The division includes a brief overview chapter followed by a separate chapter for each of the six submenus: *Configuring Network Options*, *Configuring DTE Options*, *Configuring Test Options*, *Configuring Dial Options*, *Configuring Management Functions*, and *Configuring Unit Utilities*.

Dial

Dial provides manual dial backup or SW56 dial functions. For more information, see the chapter *Activating Dialing Functions*.

VT 100 TERMINAL CONNECTION AND OPERATION

To control the DSU IV ESP using a VT 100 terminal, perform the following procedure:

1. Select a terminal interface through the front panel. Select **3 CONFIG, 5 MANAGEMENT, 1 INTERFACE, 1 TERM CONTROL**.
2. Set the CONTROL RATE to match the VT 100 terminal.
3. Using the provided VT 100 terminal adapter cable, connect the COM port of a VT 100 compatible terminal or equivalent to the eight-pin modular jack labeled CONTROL on the rear of the DSU IV ESP. This connection is used for both local and remote configuration.
4. Establish the connection and press **Enter** repeatedly until the Terminal Menu appears (Figure 3-3).
5. Make selections by entering the number corresponding to the chosen parameter. Press **ESC** to return to the previous screen.



*Due to the increased display capabilities, the VT 100 menu structure differs from the front panel interface. The appendix **Terminal Menu Structure** includes the VT 100 screens as well as a complete menu tree for accessing configuration selections. Descriptions of individual menu options are provided throughout this manual based on the front panel menu structure. See Figure 5-1 for the front panel configuration menu tree.*



*When establishing a TELNET session, the system prompts for a password. The default password is **adtran**. This password can be modified through the Management menu. See the chapter **Configuring Management Functions** for more information.*

```
DSU IV ESP TERMINAL MENU

1 STATUS
2 LOCAL CONFIG
3 REMOTE CONFIG
4 LOCAL TEST
5 REMOTE TEST
6 DIAL SW56

-----

ESC = EXIT          ENTER SELECTION ->
```

Figure 3-3
Terminal Interface Main Menu (SW56 Mode)

Chapter 4

Applications

This chapter provides examples of some common DSU IV ESP applications. The examples include LAN applications with both SLIP/PPP and ethernet management and a dial backup application.

LAN APPLICATION WITH SNMP/TELNET MANAGEMENT

The DSU IV can be managed through an established TELNET session or an SNMP-based network manager like HP Openview®, IBM Netview®, or SunNet Manager®.



The ADTRAN DSU IV ESP MIB is available in the support section of the ADTRAN Web page at www.adtran.com.

SNMP and TELNET management are provided by one of the following interfaces:

- A device (i.e., a router) running SLIP protocol. Connection is made through the DSU IV's control port. See Figure 4-1.
- A device (i.e., a router) running async PPP protocol. Connection is made through the DSU IV's control port. See Figure 4-1.
- A LAN. Connection is made through the optional 10baseT ethernet interface provided on the ESP ethernet card (part number 1204005L1). See Figure 4-2.

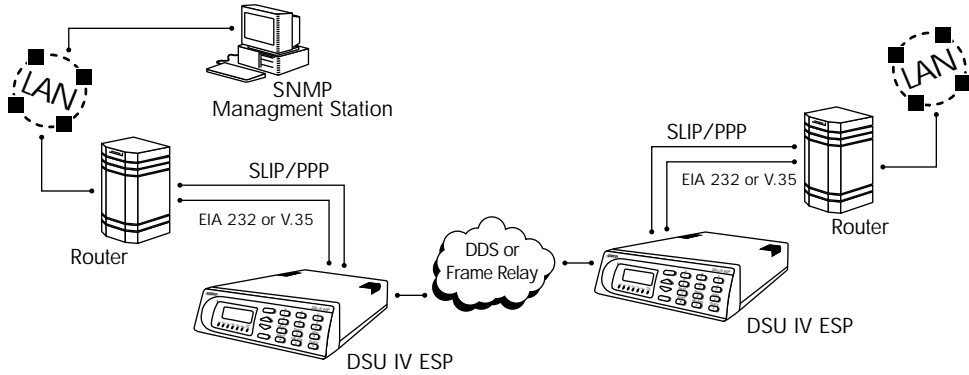


Figure 4-1
SLIP/PPP LAN Application with SNMP/TELNET Management

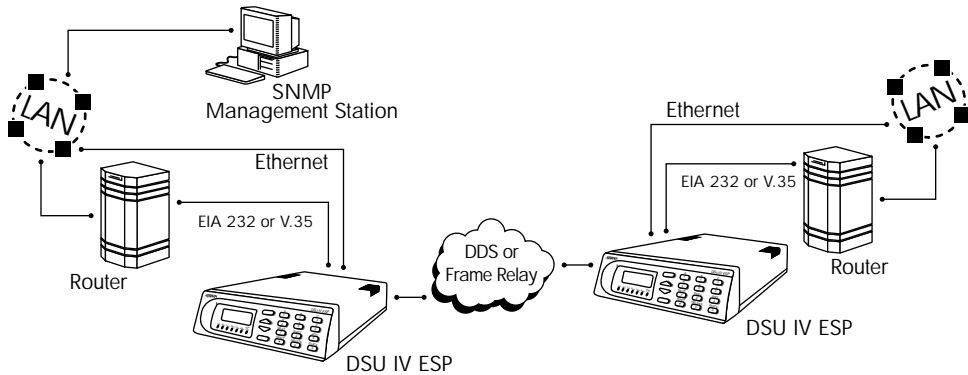


Figure 4-2
Ethernet LAN Application with SNMP/TELNET Management

Minimum Configuration Requirements for SNMP/TELNET Access

The following options are the minimum configuration requirements for establishing SNMP or TELNET access. Once these options are configured, the remaining options may be configured using SNMP/TELNET. See the menu tree in Figure 10-1 in the chapter *Configuring Management Functions* for the front panel menu path to these options.

Interface

Select SLIP Control, PPP Control, or Ethernet LAN as the DSU IV interface type. The ESP ethernet card must be installed for the Ethernet LAN selection.

IP Address

Enter the DSU IV ESP IP address.

Subnet Mask

Enter the subnet number. This address is available from the network administrator.

Gateway IP Address (if required)

Enter the Gateway node IP address. This address is necessary only if the DSU IV and the network manager are connected through a Gateway node. This address is available from the network administrator.

Special Features of this Application

Customize the SNMP/TELNET application using the following DSU IV ESP features:

- Designate SNMP hosts to receive SNMP traps from the DSU IV (one to five entries).
- Secure the DSU IV by limiting SNMP network management access. If enabled, the DSU IV only responds to a user-configured list of SNMP network managers (one to five entries).

Configure these options through the Management portion of the Configuration menu. See the chapter *Configuring Management Functions* for more information.

DIAL BACKUP APPLICATION

The DSU IV provides point-to-point connection to the network. With one of the ESP DBU option cards installed, the unit is capable of dial backup, allowing the unit to dial around a failed network. See Figure 4-3.

With the DBU options, configure the unit to:

- Enter DBU under specific primary network conditions.
- Lock out DBU over the weekend and/or at specified times of the day.
- Dial a specified number when a DBU activation condition is detected.

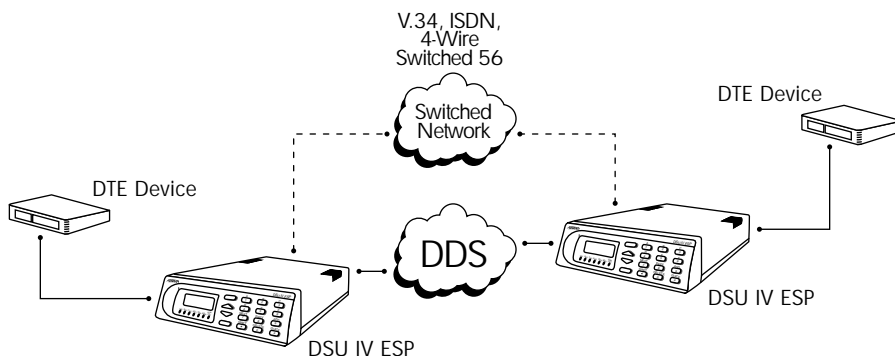


Figure 4-3
Dial Backup Application

Entering Dial Backup Mode

When a condition for entering dial backup mode is detected, the Alarm LED turns on and the buzzer sounds. The buzzer alternates between 30 seconds on and 30 seconds off unless the DDS line is restored or it is disabled by using the **Quick** key and selecting **Turn Off Beep**. See the section *Front Panel* in the chapter *Operation* for more information on the **Quick** key.

Operation During Critical Times

The following four conditions will cause a DSU IV ESP to enter dial backup mode:

Loss of Sealing Current

Sealing current is a low voltage DC current provided by the central office (CO) to prevent corrosion over the copper wires used in the local loop. Sealing current may also be used for local loop testing purposes. An absence of sealing current generally is an indication that the loop is open.

Out of Service (OOS) Signal

An OOS signal, generated by the network, indicates a device (or devices) in the network is out of service.

No Receive Signal

This is an indication that the local loop copper pairs may be either open or shorted or the OCU in the CO is inoperative. In a private network this may indicate that the transmitter of the remote DSU is inoperative.

All 1s or all 0s Condition

This condition is usually generated by the network to indicate some device (or devices) in the network is inoperative. Upon detecting an all 1s or all 0s condition, the DSU IV ESP initiates a handshake routine to determine whether the remote unit's DTE is the source of the all 1s or 0s condition or if an actual network failure exists.

Answer Always

When this option is enabled, the unit goes into DBU mode if a call is present regardless of the status of the dedicated circuit. It is recommended that the DBU Passcode be used in this mode since inadvertent calls could stop data flow indefinitely.



The DBU Answer Test is disabled if this option is chosen.

Operation During Noncritical Times

The DSU IV ESP may be configured not to enter dial backup mode if data terminal ready (DTR) is low. This feature prevents the DSU IV ESP from entering dial backup during noncritical times such as nights and weekends.

For more information, see the chapter *Configuring Dial Options*.

Weekend and Time of Day Lockout

The DSU IV ESP may be configured not to enter dial backup mode based upon the time of day or weekend status. This protects the customer from being charged for a switched call during off hours should the dedicated circuit fail. See the chapter *Configuring Dial Options* for more information.

Conditions for Returning to the DDS Circuit

The DSU IV ESP can be configured to automatically revert to the DDS circuit from the dial backup mode or wait to be returned to the DDS manually. Once the DSU IV ESP enters dial backup mode, the unit polls the DDS circuit once every 100 ms to determine if the condition causing the DDS circuit failure has been corrected. Once the DSU IV ESP determines that the problem has been properly corrected and the DDS circuit is stable, it will wait for the amount of time specified in the restore timer (1 - 255 minutes) before reverting to the DDS circuit. Polling of the DDS circuit is non-intrusive and return to the DDS circuit generally takes 2 - 3 seconds. The backup connection is maintained for one minute after the DDS circuit is restored.

See the chapter *Configuring Dial Options* for more detailed information.

Chapter 5

Configuration Overview

The DSU IV ESP contains four different user profiles (sets of configuration options) stored in read only memory; see the appendix *Configuration Profiles*. The unit is shipped from the factory with profile number 1 (default configuration) loaded into the current (nonvolatile configuration) memory. If profile 1 matches requirements for the system, then no additional configuration is required to put the unit into service. If profile 1 does not match system requirements, it can be modified or one of the other profiles that more closely matches the system requirements can be loaded into current memory. When a different profile is loaded or the existing profile is modified, it is stored in the current (nonvolatile configuration) memory. The DSU IV ESP is then configured with that profile every time power is turned on or the unit is reset.

CONFIGURATION METHODS

The DSU IV ESP responds to the following methods of configuration:

- AT commands
- V.25 commands
- Front panel commands
- A VT 100 compatible terminal
- SNMP/TELNET through a device running SLIP/PPP protocol
- SNMP/TELNET through a LAN running ethernet protocol (available when the optional ESP Ethernet card is installed)

AT and V.25 commands have limited access to configuration parameters. The commands are detailed in the following sections of this chapter. See the chapters *Installation* and *Operation* for more information on all other configuration methods. For an example application using the SLIP/PPP or ethernet interface, see the chapter *Applications*.

Descriptions of each Configuration menu item are given in the following chapters: *Configuring Network Options*, *Configuring DTE Options*, *Configuring Test Options*, *Configuring Dial Options*, *Configuring Management Functions*, and *Configuring Unit Utilities*.

A complete Configuration menu for the front panel is shown in Figure 5-1. The VT 100 menu tree is shown in the appendix *Terminal Menu Structure*.



*Due to the increased display capabilities, the VT 100 menu structure differs from the front panel interface. The appendix **Terminal Menu Structure** includes the VT 100 screens as well as a complete menu tree for accessing configuration selections. Descriptions of individual menu options are provided throughout this manual based on the front panel menu structure. See Figure 5-1 for the front panel configuration menu tree.*

Page holder for Figure 5-1.

AT Commands

The DSU IV ESP can be configured and controlled with in-band AT commands from an asynchronous DTE port just as modems are.

To exit the data mode and enter the command mode, the asynchronous DTE device must transmit a proper escape sequence of three pluses (+++) to the DSU IV ESP. A specified time delay must occur between the last data character and the first escape sequence character. This is the guard time delay, and it can be changed by writing a value to the S12 register. The default value for the guard time is one second. For a valid escape sequence to occur, the DTE must transmit the escape code character three times in succession with delay between each character being less than the guard time.

Once the command mode is entered, AT commands can be transmitted to the DSU IV ESP to configure most of the options or initiate tests to check both the DSU IV ESP and the network connections. All command lines must begin with the AT character set in either capital or lower case letters.

The command line may contain a single command or a series of commands after the AT attention code. When a series of commands is used, the individual commands may be separated with spaces for readability. The maximum length for a command line is 40 characters. Each command line is executed by the DSU IV ESP upon receipt of a terminating character. The default terminating character is a carriage return (ASCII 013), but it can be changed by writing a different value to register S3.

Before the terminating character is transmitted, the command line can be edited by using the backspace character (ASCII 008) to erase errors so the proper commands can be entered.



*Not all parameters can be selected using these commands. Valid commands are listed in the appendix **AT Commands**.*

V.25 bis Commands

When configured for the V.25 bis option, the DSU IV ESP accepts in-band dialing and configuration commands from both synchronous and asynchronous DTE ports.

The V.25 bis option supports the following protocols:

- SDLC
- Bi-Sync
- Asynchronous

SDLC Option

Character Format

- Data bits - 8
- Parity bit - Ignored

Command Structure

[F][A][C][V.25 bis COMMAND][FCS][F]

The address field [A] is FFH. The control field [C] is set to 13H except for cases of multi-frame responses. For this case, the control field is set to 03H in all but the last frame. The 03H in the control field indicates that other frames are to follow while the 13H in the control field indicates the final frame.

Bi-Sync Option

Character Format

- Data bits - 7
- Parity bit - Odd

Command Structure

[SYN][SYN][STX][V.25 bis COMMAND][ETX]

Asynchronous Option

Character Format

- Start bit - 1
- Data bits - 7
- Parity bit - Even
- Stop bit - 1

Command Structure

[V.25 bis COMMAND][CR][LF]

Command Descriptions

The ADTRAN V.25 bis command set is a subset of the CCITT V.25 bis command set. In addition to the CCITT commands supported, ADTRAN has added configuration commands for both local and remote DSUs. The ADTRAN V.25 bis command set follows:

CNL	Configuration local
CNR	Configuration remote

Possible responses to V.25 bis commands follows:

VALA	Valid V.25 command processed
INV	An invalid command detected
INVCU	Unknown command detected
INVPS	Invalid parameter syntax
INVPV	Invalid parameter value
INVBL	Invalid local password
INVBML	Invalid remote password

If verbose responses are disabled (ATV0), the following three-character responses are the only ones returned:

VAL	Valid V.25 command processed
INV	Invalid command received

Syntax and Possible Responses

CNL (Configuration Local)

This command is used to pass AT commands to the local DSU via the V.25 bis command processor. This allows the DSU IV ESP to be configured with AT commands using a synchronous interface. The format is as follows:

```
CNL[LOCAL PASSWORD];AT[ONE OR MORE AT COMMANDS]
```

A local password may not be required depending on the present configuration of the unit. Responses to CNL commands are returned in the data format currently configured. Possible responses include: VALA and INVAn.

CNR (Configuration Remote)

This command is used to pass AT commands over the network to the remote DSU via the V.25 bis command processor. This allows a remote DSU IV ESP to be configured from a synchronous interface. The format of this command follows:

```
CNR[REMOTE PASSWORD];AT[ONE OR MORE AT COMMANDS]
```

The remote password may or may not be required depending on the present configuration of the remote unit. Responses to the CNR commands are returned in the data format currently configured. Possible responses include: VAL and INVAn.

Chapter 6

Configuring Network Options

NETWORK OPTIONS

The Network Options configuration parameters control the loop operation of the DSU IV ESP. Once a parameter is set, **Command Accepted** is displayed briefly before returning to the active menu. Table 6-A shows the AT commands used to set the Network Options. See Figure 6-1 for the Network Options menu tree.

Table 6-A
Network Options AT Commands

Front Panel	AT Command
Loop Rate	
AUTO	%B0
2.4K	%B1
4.8K	%B2
9.6K	%B3
19.2K	%B4
38.4K	%B5
56K	%B6
64K	%B7
Network Address	
XX (decimal)	_N=xx
Remote Configuration	
1=DISABLED	&P4
2=ENABLED	&P5
Network Type	
1=DEDICATED	none
2=AT&T/MCI SW56	none
3=US SPRINT SW56	none
Clock Source	
1=MASTER	_X0
2=FROM NETWORK	_X1

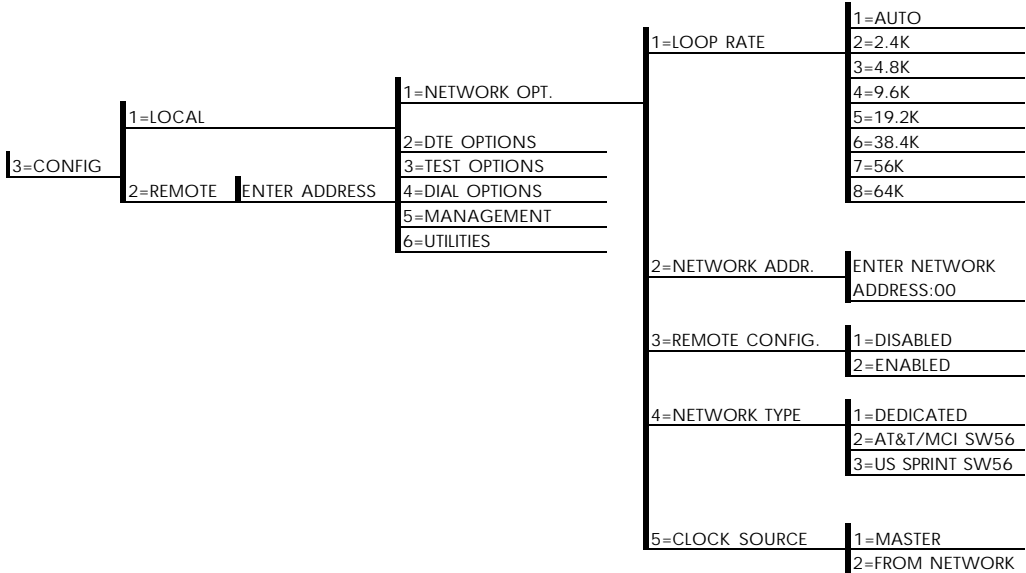


Figure 6-1
Network Options Menu Tree

Loop Rate

The Loop Rate option sets the loop operating speed. The unit should be set to the rate required by the DDS Service. The DSU IV ESP also supports subrate DTE data over a 56 or 64 kbps loop. The loop rate must be set independently of the DTE rate. Eight loop rate selections are available (shown in Figure 6-1).

The default factory setting is Auto. The various loop rates and format selections are listed in Table 6-A with the equivalent AT commands that perform the same configuration functions.

Network Address

A two-digit decimal address can be assigned to each DSU IV ESP. This addressing capability makes it possible to perform remote configuration and testing in point-to-point and multi-drop networks. Figure 6-1 shows the menu path used to change the network address. The factory default setting is 0.

Remote Configuration

This option sets up the DSU IV ESP to accept or reject remote configuration commands. The factory default setting is Enabled.

Network Type

Select the appropriate network type. The choices are dedicated, AT&T/MCI SW56, and US Sprint SW56.

Clock Source

The Clock Source option specifies the timing source for the DSU IV ESP's internal circuitry. The factory default setting is From Network.

When operating on a DDS network, the timing should be From Network. On a point-to-point private network, one DSU IV ESP must be set for Master, the other set for From Network.

Chapter 7

Configuring DTE Options

DTE OPTIONS

The DTE Options menu is used to select the configuration parameters that control the operation of the DTE Interface of the DSU IV ESP. The DTE Options menu tree is shown in Figure 7-1. Table 7-A shows the available options and their AT commands.

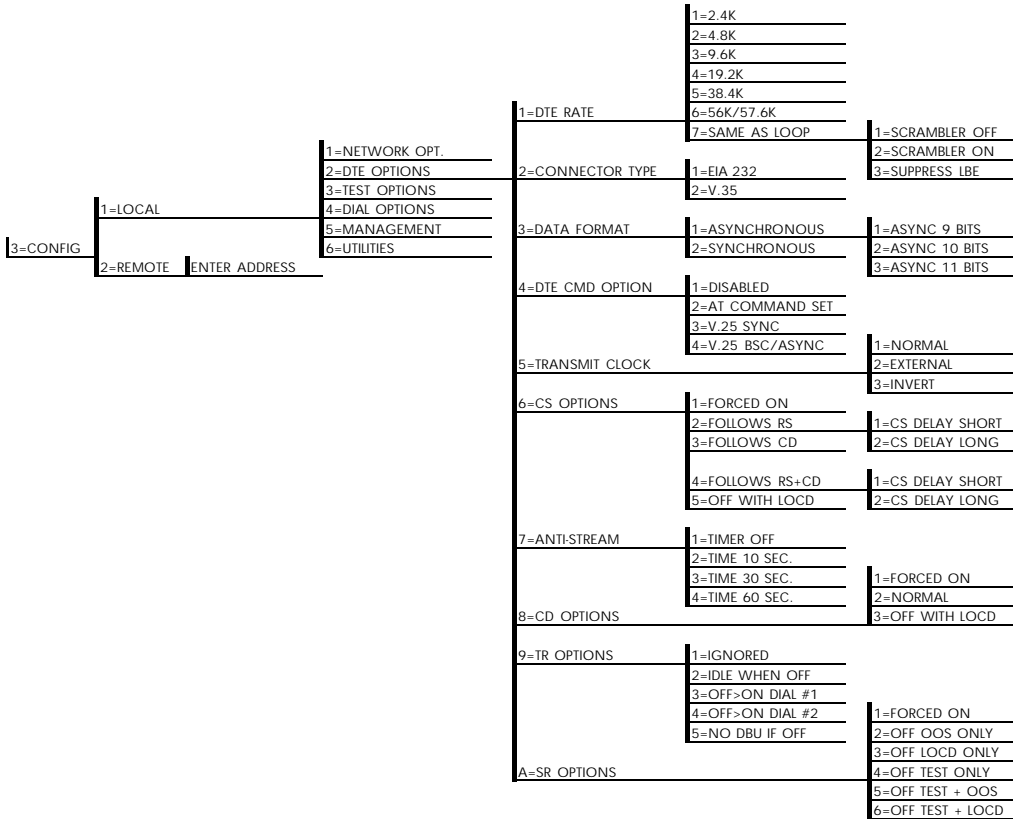


Figure 7-1
DTE Options Menu Tree

Table 7-A
DTE Options AT Commands

Front Panel	AT Command	Description
DTE Rate		
1=2.4K	%K3	DTE rate: 2.4K sync and async
2=4.8K	%K4	DTE rate: 4.8K sync and async
3=9.6K	%K5	DTE rate: 9.6K sync and async
4=19.2K	%K6	DTE rate: 19.2K sync and async
5=38.4K	%K7	DTE rate: 38.4K sync and async
6=56K/57.6K	%K8	DTE rate: 56K sync or 57.6K async
7=SAME AS LOOP	%K9	DTE rate matches loop rate
1=SCRAMBLER OFF	_F0	DTE data scrambler disabled (64 kbps loop rate only)
2=SCRAMBLER ON	_F1	DTE data scrambler enabled (64 kbps loop rate only)
3=SUPPRESS LBE	_F2	Suppresses loopback enable code (LBE) in transmit data from the DTE after 30 bytes in a row detected (64 kbps loop rate only)
Data Format		
1=ASYNCHRONOUS	&Q0	Asynchronous DTE operation mode
2=SYNCHRONOUS	&Q2	Synchronous DTE operation mode
DTE CMD Option		
1=DISABLED	none	Disables all DTE command modes
2=AT COMMAND SET	none	Enables AT command mode for DTE
3=V.25 SYNC	none	Enables V.25 (SDLC) command mode for DTE
4=V.25 BSC/ASYNC	none	Enables V.25 (bisync or async) command mode for DTE
Transmit Clock		
1=NORMAL	&X0	TX clock from DSU selected
2=EXTERNAL	&X1	ETC clock from DTE selected
3=INVERT	&X3	Inverted Tx clock from DSU selected

Table 7-A (Continued)
DTE Options AT Commands

Front Panel	AT Command	Description
CS Options		
1=FORCED ON	&R0	CS always on
2=FOLLOWS RS	&R1	CS state same as RS state
3=FOLLOWS CD	&R2	CS state same as CD state
4=FOLLOWS RS+CD	&R3	CS state same as RS and CD state
5=OFF WITH LOCD	&R4	Off 5 sec after LOCD (SW56 only)
For Follows RS options, select the length of the delay.		
1=CS DELAY SHORT	_D0	Short delay from RS to CS selected
2=CS DELAY LONG	_D1	Long delay from RS to CS selected
Anti-Stream		
1=TIMER OFF	%T0	Anti-stream timer disabled
2=TIME 10 SEC.	%T1	Timeout equals 10 seconds
3=TIME 30 SEC.	%T2	Timeout equals 30 seconds
4=TIME 60 SEC.	%T3	Timeout equals 60 seconds
CD Options		
1=FORCED ON	&C0	On all the time
2=NORMAL	&C1	On only when data present on loop
3=OFF WITH LOCD	&C2	On except after disconnect (SW56 only)
TR Options		
1=IGNORED	&D0	Ignore the TR input
2=IDLE WHEN OFF	&D2	See the following note.
3=OFF>ON DIAL #1	&D3	Dial Stored #1: TR goes off to on (SW56 only)
4=OFF >ON DIAL #2	&D4	Dial Stored #2: TR goes off to on (SW56 only)
5=NO DBU IF OFF (valid only when DBU ESP card is installed and Network Type is set to DEDICATED)	&D3	No dial backup if TR is off.

Table 7-A (Continued)
DTE Options AT Commands

Front Panel	AT Command	Description
SR Options		
1=FORCED ON	&S0_C1	Always on
2=OFF OOS ONLY	&S1_C1	Off when network out of service
3=OFF LOCD ONLY	&S3	Off 5 sec after disconnect (SW56)
4=OFF TEST ONLY	&S0_C0	Off for test only
5=OFF TEST+OOS	&S1_C0	Off for test and OOS
6=OFF TEST + LOCD	&S5	Off 5 sec after disconnect or test.



For IDLE WHEN OFF option: In SW56 mode, TR off causes the DSU to go On Hook (Idle). The unit does not dial out if TR is off. In dedicated mode, the DSU goes into DTE command mode when TR goes off. When TR goes on, if the DSU does not receive a command in the number of seconds set in S40, the DSU goes into data mode.

DTE Rate

If a DTE rate higher than the current loop rate is selected, the DTE rate automatically sets to match the slower loop rate; the DSU IV ESP briefly displays **DTE RATE SAME AS THE NETWORK** before returning to the status screen. The factory default setting is **SAME AS LOOP**.

If the DSU IV ESP is set for a loop rate of 64 kbps, then scrambler on/off options are available. The factory default setting is Scrambler Off.



For 64 kbps clear channel operation, the DTE data sequences might mimic network loop maintenance functions and erroneously cause other network elements to activate loopbacks. To prevent this, the Scrambler On option should be selected for both the local and remote DSU IV ESP.

Connector Type

The Connector Type option is used to specify which of the primary channel connectors is used to connect to the DTE. The factory default setting is V.35. There are no AT commands available to set the connector type.

Data Format

The Data Format option is used to select either the synchronous or asynchronous mode of operation for the DTE interface. The factory default setting is Synchronous. If asynchronous is chosen, the length of the data bytes must be selected.

Table 7-A shows the AT commands that can be used to set the Data Format to asynchronous or synchronous.

DTE Command Option

The DTE Command option is used to enable a DTE command mode or disable all modes. The available modes are AT , V.25 synchronous, and V.25 bisynchronous/asynchronous commands.

Transmit Clock

The Transmit clock option is used to select the source of the clock used to transfer data from the DTE into the DSU IV ESP.

Table 7-A shows the AT commands used to set the Transmit Clock options.

The External clock option is normally used in modem tail circuit applications. A DSU to modem interconnect diagram for this application is shown in the appendix *DSU to Modem Interconnect*. The External clock option is also recommended when the EIA-232 connector is used for 56 kbps and 64 kbps applications. Using this option eliminates data errors caused by excessive delays in the DTE transmit clock receiver and transmit data driver.

The Invert clock option is recommended when the EIA-232 connector is used for rates other than 56 kbps or 64 kbps.

Clear to Send (CS) Options

The CS Options menu is used to select the control mode for the CS lead. The default factory setting is Follows RS with CS Delay Short.

If one of the options chosen involves request to send (RS), then the delay from RS to CS must be selected. Table 7-A shows the AT Commands used to set the CS options.

Specified times for the short and long delays at the different operating speeds are shown in Table 7-B.

Table 7-B
Short and Long Delays at Different Operating Speeds

Rate	Short Delay	Long Delay
64	1.1ms	16.1ms
56	1.1ms	16.1ms
19.2	1.5ms	16.5ms
4.8	1.5ms	16.5ms
2.4	1.5ms	16.5ms

Anti-Stream

The Anti-Stream option is used to select the anti-stream timeout. The anti-stream timeout is the maximum time the DSU IV ESP transmits data into the network from the DTE. This feature prevents one DTE device on a multi-drop network from continuously tying up the transmit circuit back to the master DSU.

The anti-stream timer is reset to zero when RS changes to the active state and is updated every second while RS is active. When the anti-stream timeout expires, the DSU IV ESP stops transmitting DTE data into the network but continues to accept data from it. This condition exists until the DTE deactivates the RS input.

The factory default setting is Timer Off. Table 7-A shows the available options and their AT commands.

CD Options

The CD Options menu is used to select the control mode for the receive line signal detector (CD) lead. The default factory setting is Normal. Table 7-A shows the equivalent AT commands for setting CD options.

Data Terminal Ready (TR) Options

The TR Options menu is used to select the DSU IV ESP response to the data terminal ready (TR) lead. The factory default setting is Ignored. Table 7-A shows the equivalent AT commands for setting TR options.



The NO DBU IF OFF selection is available only when a DBU ESP card is installed and the Network Type is set to DEDICATED.



To disable DBU when DTR is off, set this option for IDLE WHEN OFF.

Data Set Ready (SR) Options

The SR Options menu is used to select the operating mode for the data set ready (SR) lead. Use **Shift + A** to activate the SR Options submenu; press **Enter** to enter the SR Options submenu. The factory default setting is Off Test Only. Table 7-A shows the AT commands for setting SR options.

Chapter 8

Configuring Test Options

TEST OPTIONS

The Test Options menu enables or disables different test modes and specifies the maximum test time allowed. See Figure 8-1 for the Test Options menu tree. The available options and the their AT commands are listed in Table 8-A.

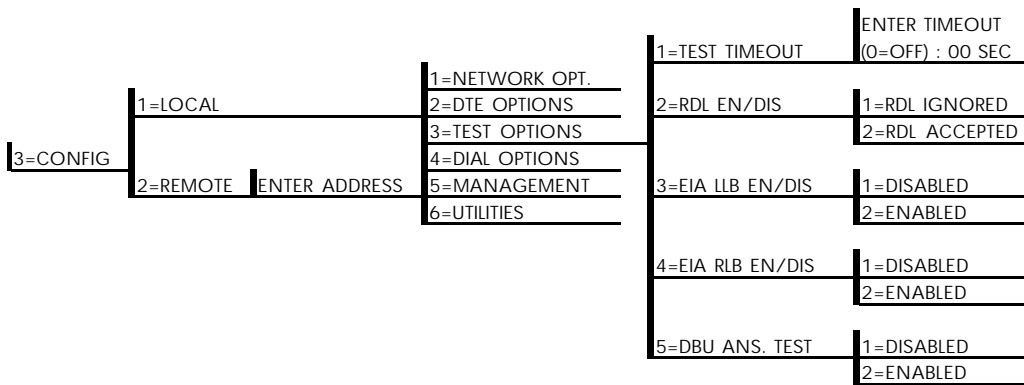


Figure 8-1
Test Options Menu Tree

Table 8-A
Test Options AT Commands

Front Panel	AT Command	Description
Test Timeout		
ENTER TIMEOUT	S18=x	Specify 0 - 255 second test timeout
RDL Enable/Disable		
1=RDL IGNORED	&T5	RDL request from remote DSU ignored
2=RDL ACCEPTED	&T4	RDL request accepted
EIA LLB Enable/Disable		
1=DISABLED	_A0	No response to local loopback
2=ENABLED	_A1	Responds to local loopback
EIA RLB Enable/Disable		
1=DISABLED	_R0	No response to remote loopback
2=ENABLED	_R1	Responds to remote loopback
DBU Answer Test		
1=DISABLED	none	Remote unit does not accept DBU tests from far end
2=ENABLED	none	Remote unit accepts DBU tests from far end

Test Timeout

The Test Timeout option sets the length of time a DSU IV ESP remains in a test mode before automatically returning to the data mode. Enter the timeout in two-digit decimal value. The factory default setting is off (0).

Remote Digital Loopback (RDL)

The RDL option specifies whether the DSU IV ESP responds to an RDL request from the far end of the circuit. The factory default setting is RDL Accepted.

EIA LLB

The EIA LLB (Electronics Industries Association local loopback) option specifies whether the DSU IV ESP responds to the local loopback input from the DTE. The factory default setting is Disabled.

EIA RLB

The EIA RLB (remote loopback) option specifies whether the DSU IV ESP responds to the RLB input from the DTE. The factory default setting is Disabled.

DBU Answer Test

The dial backup connection can be tested while data is passing on the DDS. In order for this test to be performed, DBU Answer Test must be enabled on the remote unit. If DBU Answer Test is not enabled, the remote unit will not accept a DBU test from the other end. The factory default setting is Disabled.



The DBU Answer Test is not available if the DBU Criteria option Answer Always is Enabled.

Chapter 9

Configuring Dial Options

DIAL OPTIONS

The Dial Options menu stores up to ten phone numbers, enables/disables the SW56 auto answer capability, defines the dial backup operation when the DDS circuit fails, and programs the passcode security feature.

Figure 9-1 shows the full Dial Backup Options (4=Dial Options) menu. Note that some items are restricted to certain DBU cards.

PHONE NUMBERS

The DSU IV ESP stores up to 10 numbers of 36 digits each. Edit a phone number by reentering the entire number. This process overwrites the previously stored number.

Table 9-A shows the AT Commands available for the Phone Number options.

ISDN Dial Backup

Setting the Service Profile Identifier (SPID)

For ISDN dial backup, the service profile identifier (SPID) is stored in Stored Number 9. The SPID is a sequence of digits identifying ISDN terminal equipment to the ISDN switch when more than one ISDN set has been attached to the same central office line. The SPID is assigned by the telco when the ISDN line is installed and normally resembles the phone number.

Only the AT&T 5ESS switch is capable of recognizing a point-to-point configuration, eliminating the need for a SPID. All other switch types require a SPID.

Setting the Local Directory (LDN) Number

For ISDN dial backup, the LDN is stored in Stored Number 10.

Table 9-A
AT Commands for Storing Phone Numbers

AT Command	Description
&Zn=	Store Phone Number
&Z9=	Enter SPID Number for ISDN dial backup
&Z10=	Edit LDN for ISDN dial backup

SW56 AUTO ANSWER

The SW56 Auto Answer option is used to specify how incoming calls are to be answered. If **ENABLED**, incoming calls are automatically answered by the DSU IV. If **DISABLED**, an incoming call can be answered manually, by an AT or V.25 command from the DTE, or by raising TR from the DTE.

DBU OPTIONS

The DBU Options are used to select the modes of operation for the Dial Backup features. There are ten standard options available with additional options for specific backup services. Table 9-B lists the DBU options and their AT commands for all models.

Standard DBU Options

Automatic DBU

The Automatic DBU option specifies whether the unit automatically enters dial backup mode or waits for manual setup. The factory default setting is Disabled.

Number to Dial

The Number to Dial option offers a selection of stored numbers for the unit to automatically dial. If the leased line fails, and the DSU IV ESP is set to originate, it dials the numbers (in chronological order) specified under this option to set up the dial backup line. The factory default setting is Dial With #1.

Originate/Answer

This option specifies whether the DSU IV ESP originates or waits to answer if the dedicated circuit fails. One end must be set to Originate and the other to Answer. The factory default setting is Answer.

DBU Criteria

These options specify the conditions that will cause the DSU IV ESP to enter the backup mode.

When Out of Service (OOS)

When enabled, the DSU IV ESP enters backup mode if an out-of-service condition is detected. The factory default setting is Enable.

No Receive (RX) Signal

When enabled, the DSU IV ESP enters backup mode when a loss of signal is detected. The factory default setting is Enable.

No Sealing Current

When enabled, the DSU IV ESP enters backup mode when a loss of sealing current is detected. The factory default setting is Enable.

When all 1s/0s

When this option is enabled, the DSU IV ESP monitors the receive data for strings of 1s or 0s that are longer than the Fail Timer. If this condition is detected, the local DSU IV ESP initiates a handshake routine with the remote unit to determine if the DTE is generating the constant data pattern or if the network has failed.

Answer Always

If enabled, the answer unit answers any incoming call regardless of failed conditions.

Weekend Lockout

If enabled, no backup will occur from midnight Friday to midnight Sunday.



Weekend and daily lockout apply to automatic DBU only. Manual DBU is not affected. Also, this parameter affects the originate end only. The answer end remains DBU-capable at all times.

Daily Lockout

Enable/disable the daily lockout specified by the fields Enable Hour and Disable Hour.

Lockout Start

Enter the hour that the daily lockout begins and dial backup is disabled (0 to 23). Only applies if the Daily Lockout parameter is ENABLED.

Lockout End

Enter the hour that the daily lockout ends and dial backup is reactivated (0 to 23). Only applies if the Daily Lockout parameter is ENABLED.

Auto Restore

Once the DDS circuit is down, the DSU IV ESP remains in backup until the DDS circuit is active for the length of time specified for the restore timer. The selection is entered in minutes (up to 255). If set to 0, the DDS must be restored manually. The factory default setting is 1 minute.

RESTORE TIMER
(0=OFF): __ __ MIN

Redial Counter

This option sets the number of times the DSU IV ESP re-dials the far end when entering backup mode. The redial count, which is manually entered, can be up to a maximum of 99 attempts. If the DSU IV ESP encounters a busy or reorder, it attempts to establish the call the specified number of times. The factory default setting is 5.

ENTER REDIAL
COUNT: __ __

Fail Timer

This option sets the amount of time the dedicated circuit failure condition must be active before the DSU IV ESP attempts

backup. The amount of time, which is manually entered, can be up to 990 seconds. The factory default setting is 30 seconds.

AUTO DBU FAIL

TIME: __ __ x 10sec

Wait to Redial

This option works in conjunction with the preceding Redial Counter. It selects the amount of time between redial attempts to connect the backup line. The amount of time, which is manually entered, can be up to 99 seconds. The factory default setting is 10 seconds.

WAIT TO REDIAL

TIME: __ __ SEC

Table 9-B
DBU Options AT Commands for All Models

Front Panel	AT Command	Description
Automatic DBU		
1=DISABLED	_K0	Automatic DBU disabled
2=ENABLED	_K1	Automatic DBU enabled
Number to Dial		
1=DBU WITH #1	_B0	Dial stored #1
2=DBU WITH #2	_B1	Dial stored #2
Originate/Answer		
1=DBU ORIGINATE	_E0	Originates call if DDS fails
2=DBU ANSWER	_E1	Answers call if DDS fails
DBU Criteria		
WHEN OUT OF SERVICE		
1=Disabled	_G0	No DBU for OOS
2=Enabled	_G1	DBU when OOS
NO RECEIVE (RX) SIGNAL		
1=Disabled	_H0	No DBU when RX signal absent
2=Enabled	_H1	DBU when RX signal absent
NO SEALING CURRENT		
1=Disabled	_I0	No DBU when sealing current absent
2=Enabled	_I1	DBU when sealing current absent
WHEN ALL 1S/OS		
1=Disabled	_P0	No DBU when all 1s/Os detected
2=Enabled	_P1	DBU when all 1s/Os condition exists
ANSWER ALWAYS		
1=Disabled	none	Answer unit answers only under specified conditions.
2=Enabled	none	Answer unit answers any incoming call regardless of failed condition.

Table 9-B (Continued)
DBU Options AT Commands for All Models

Front Panel	AT Command	Description
WEEKEND LOCKOUT		
1=Disabled	none	Disables weekend lockout feature
2=Enabled	none	No backup occurs from midnight Friday to midnight Sunday
DAILY LOCKOUT		
1=Disabled	none	Sets dial backup lockout starting hour
2=Enabled	none	Sets dial backup lockout ending hour
LOCKOUT START	none	Sets hour to enable dial backup
LOCKOUT END	none	Sets hour to disable dial backup
Auto Restore	S31=x	Sets restore timer
Redial Counter	S57=x	Sets redial counter
Fail Timer	S58=x	Sets fail timer
Wait to Redial	S59=x	Sets time between redial attempts

DBU Options for S4W Card

Network Type

This option selects the company providing the switched digital service. When US Sprint is selected, an automatic echo canceler suppressor tone is emitted by the DSU IV ESP when dialing. Options include: AT&T/MCI/Other and US Sprint.

DBU Options for V.34 Card

Table 9-C shows the equivalent AT commands for setting Error Control, Flow Control, and Compression options.

Error Control

This option determines the type of error control to be negotiated at the start of a V.34 modem connection. The factory default setting is AUTO V.42/MNP.

Flow Control

This option is used to select the type of flow control used by the V.34 modem. The factory default setting is CTS Only.

Compression

This option is used to select V.42 bis data compression for V.32 bis or V.34 operation when running asynchronously. When enabled, data throughput speeds as high as 57.6 kbps may be achieved. For synchronous applications, the speed is limited to a maximum of 33.6 kbps for the V.34. The factory default setting is Enabled.

Table 9-C
DBU Options AT Commands for V.34 Card

DBU Options	AT CMD	Description
Error Control		
1=BUFFERED	\N0	Normal operation. No error control. Allows speed matching, buffering, and flow control.
2=DIRECT	\N1	Direct operation. No error control, no buffer, and no flow control.
3=RELIABLE MNP	\N2	Reliable MNP operation. Uses MNP error control.
4=AUTO MNP	\N3	Auto-Reliable MNP operation. Tries MNP error control first; uses normal operation if necessary.
5=RELIABLE V.42	\N4	Reliable V.42 (LAPM) operation. Uses V.42 (LAPM) error control. If V.42 (LAPM) error control cannot be used the call is disconnected.
6=REL. V.42/MNP	\N5	Reliable V.42 (LAPM) or MNP operation. Uses either V.42 (LAPM) or MNP error control. If neither can be used the call is disconnected.
7=AUTO V.42/MNP	\N6	Auto-Reliable V.42 (LAPM) or MNP operation. Tries to use V.42 (LAPM) error control first, and MNP error control next. If neither can be used, then Normal operation is used.
Flow Control		
1=DISABLED	\Q0	Flow control disabled
2=XON/XOFF	\Q1	Enables XOn/XOff flow control
3=CTS ONLY	\Q2	Enables CTS flow control from DCE
4=RTS/CTS	\Q3	Enables CTS flow control from DCE and RTS from DTE
5=UNI XON/XOFF	\Q4	Unidirectional XOn/XOff
Compression		
1=DISABLED	%C0	Compression disabled
2=ENABLED	%C1	Compression enabled

DBU Options for ISDN Card

Switch Type

This option selects the type of telco CO switch providing the ISDN service. There are three options for ISDN switch types:

- AT&T 5ESS
- NT DMS-100
- National ISDN

DBU Passcode

The dial backup passcode adds an additional level of security to the DSU IV ESP. A passcode of one to ten characters can be programmed into the unit.

When a dial backup connection is established, the originate unit transmits a pre-programmed passcode to the answer unit over the dial backup connection before the connection is considered valid. The answer unit compares the received passcode to a pre-programmed passcode. If the passcode matches, the receive unit sends a Passcode OK message to the originate unit and goes on-line. If the passcode does not match, the receive unit sends an Invalid Passcode message to the originate unit and terminates the dial backup connection. If a passcode is not received by an answer unit with passcode enable, or if the Passcode OK message is not received by an originate unit with passcode enable, the dial backup connection is terminated.

Chapter 10

Configuring Management Functions

The Management menu is used to select the desired management interface type and to set up the necessary parameters for establishing TELNET or SNMP management. See Figure 10-1 for the Management menu tree.

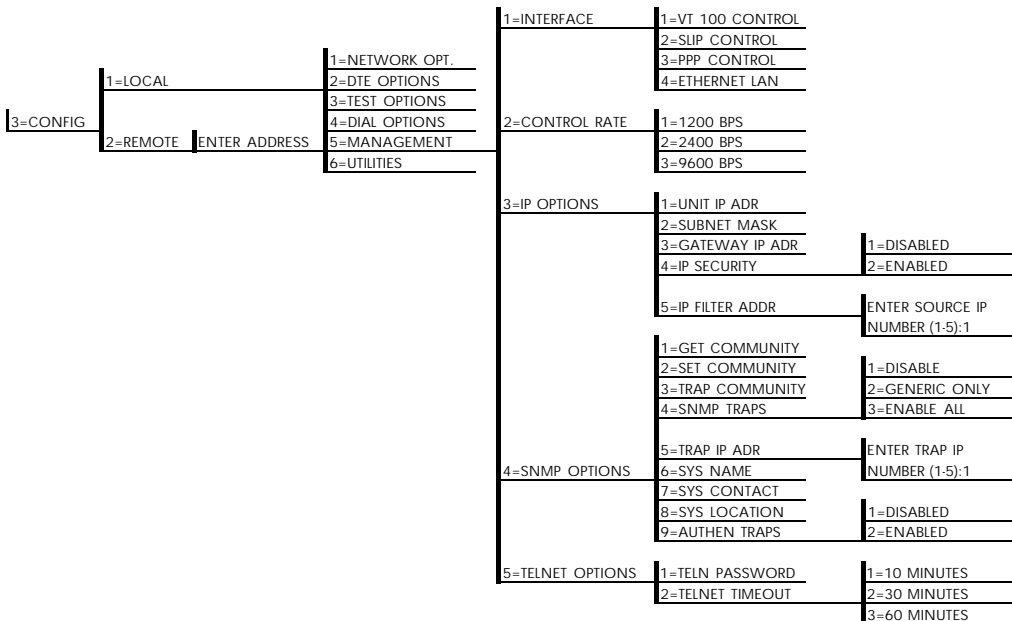


Figure 10-1
Management Menu Tree

Interface

Select the management interface type (VT 100 terminal, SLIP, or PPP) or select Ethernet LAN (ESP Ethernet card must be installed).

Control Rate

Select the control port operating speed to match the connected device (this selection only applies when the interface options is set for VT 100 terminal, SLIP, or PPP).

IP Options



When configuring the DSU IV with the front panel, use the "" key to enter a decimal point.*

Unit IP Address

Enter the DSU IV ESP IP address in dotted decimal notation.

Subnet Mask

Enter the subnet number in dotted decimal notation. This address is available from the network administrator.

Gateway IP Address

Enter the Gateway node IP address in dotted decimal notation. This address is necessary only if the DSU IV and network manager are connected through a Gateway node. If an IP packet with an unknown IP address is received, the DSU IV sends it to the Gateway.

IP Security

Enable/disable the IP security option. If enabled, the DSU IV only accepts management commands from the IP addresses (up to 5) entered into the IP Filter Address field.

IP Filter Address

Enter the IP addresses of the management stations from which the DSU IV should accept management commands. This filter must be enabled though the IP Security field.

SNMP Options

The following options must be configured when SNMP management is used.

Get Community

For SNMP operation, view and edit the Get community string. The DSU IV uses this string to validate SNMP Get (read) requests. The default value is *public*. If using front panel entry, see the section *Entering Letters Using the Front Panel* in this chapter for more information.

Set Community

For SNMP operation, view and edit the Set community string. The DSU IV uses this string to validate SNMP Set (write) requests. The default value is *private*. If using front panel entry, see the section *Entering Letters Using the Front Panel* in this chapter for more information.

Trap Community

For SNMP operation, view and edit the Trap community string. The DSU IV sends this string in SNMP trap messages to the network manager. The default value is *dsuiv*. If using front panel entry, see the section *Entering Letters Using the Front Panel* in this chapter for more information.

SNMP Traps

Specify which traps the DSU IV will send to the network manager. When enabled, the DSU IV sends SNMP traps to network managers for alarm conditions. The options are DISABLE, GENERIC ONLY, and ENABLE ALL. The GENERIC ONLY option enables the Generic Standard traps specified in the SNMP standard, RFC 1157. The ALL option sends both Generic Standard traps and the enterprise-specific traps specified in the ADTRAN DSU IV MIB.

Trap IP Address

Enter up to five IP addresses of the SNMP managers to which the DSU IV should send traps.

System Name, Contact, and Location

These data fields are general information strings (defined in MIB-II standard, RFC 1213) which can be stored by the user and retrieved by the SNMP management station. If using front panel entry, see the section *Entering Letters Using the Front Panel* in this chapter for more information.

Authentication Traps

Enable/disable the DSU IV to send SNMP authentication traps to the SNMP management station. If enabled, the DSU IV sends these traps when an SNMP request with an invalid community name string is received.



The ADTRAN DSU IV ESP MIB is available in the support section of the ADTRAN Web page at www.adtran.com.

TELNET Options

TELNET Password

View/edit the TELNET password. If using front panel entry, see the section *Entering Letters Using the Front Panel* in this chapter for more information.

TELNET Timeout

Select the inactivity time limit. If the unit is idle for the designated amount of time the unit times out, closing the TELNET

session.

ENTERING LETTERS USING THE FRONT PANEL

Some Management menus require the entry of letters rather than numbers. When configuring the unit using the front panel, special steps must be taken in order to perform these entries. The following example of entering the TELNET Password illustrates this procedure:

1. Press **5**, then **Enter** to select TELNET OPTIONS from the Management menu.
2. Press **1**, then **Enter** to select TELN PASSWORD.
3. Press the **Up Arrow** to delete the existing entry.
4. Press the **Shift** key. The cursor appears as an underscore (**_**).
5. Use the **Up** and **Down Arrow** keys to scroll to the appropriate letter.
6. Once the letter is displayed, press **Shift**. A block cursor appears in the next field.
7. To enter another letter, press **Shift**. The cursor again appears as an underscore.
8. Repeat this procedure until all letters have been entered.
9. Once password entry is complete, press the **Enter** key.



*A block cursor signifies movement from field to field. When this cursor is active, pressing the **Up Arrow** key deletes the current entry of that field. Pressing the **Down Arrow** key advances the cursor to the next field. An underscore cursor signifies letter entry. When active, pressing the **Up** and **Down Arrow** keys scrolls the alphabet.*

Chapter 11

Configuring Unit Utilities

The Utilities menu is used to enter manual commands, set/view the time and date, and view the software version, LAN MAC address, and unit serial number . See Figure 11-1 for the Utilities menu tree. AT commands are not available for this menu.

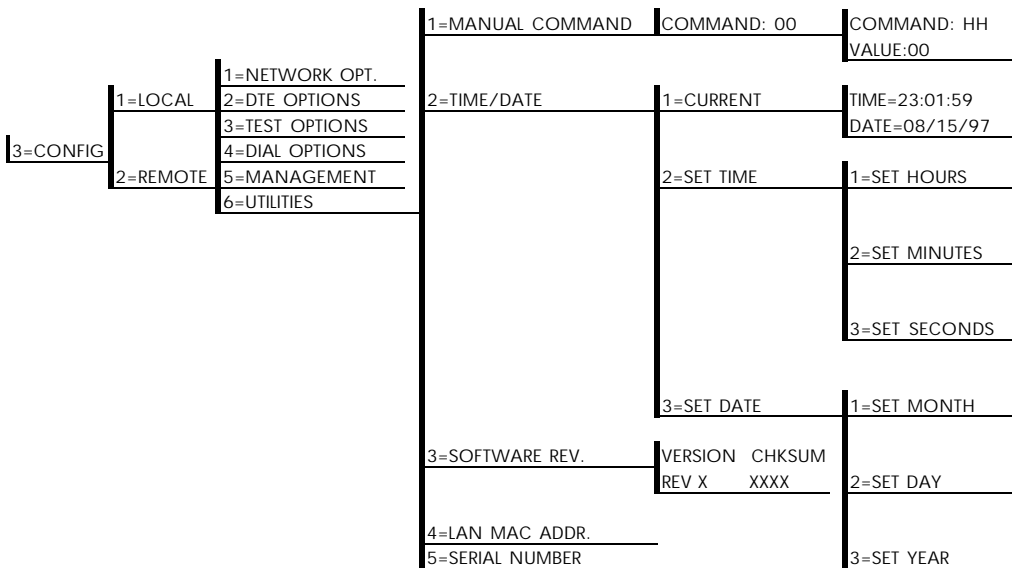


Figure 11-1
Utilities Menu Tree

Manual Command

The Manual Command option is a shortcut method for entering configuration and control commands for the DSU IV ESP. Figure 11-1 shows the menu path for the manual command. The available manual commands are listed in Table 11-A. When using the front panel, perform the following steps to enter a manual command:

1. Select 3=CONFIG from the Main menu.
2. Select 1=LOCAL.
3. Select 6=UTILITIES.
4. Select 1=MANUAL COMMAND.
5. The first display prompts for command number entry:

COMMAND:00

Use the **Up Arrow** key to delete the current entry, then use the number keys to enter the new value. Press **Shift** to activate letters A-F.

6. Press **Enter** to complete the Command entry.
7. Once the command number is entered, the display shows both the command number and the present value or setting for the command. The command value can be edited or reissued with the existing value.

COMMAND: XX VALUE: 00

8. Use the number keys to enter the hexadecimal value. Press **Enter** to complete. The system briefly displays **Command Accepted** (if the entry is valid) and returns to the active menu.

Table 11-A
Manual Commands

Command Description	Command	Value
AT Command Echo		
Disable	82	00
Enable	82	01
AT Result code		
Enable	85	00
Disable	85	01
AT Long or Short code		
Short form (Numeric)	86	00
Long form (Verbose)	86	01
AT Escape Character	2	00 to FF
AT CR Character	3	00 to FF
AT LF Character	4	00 to FF
AT BS Character	5	00 to FF
AT Escape Char. Timer	0C	00 to FF
Abort Call Timer	7	00 to FF
DTR Recognize Delay	19	00 to FF
DTR Initiated Command Timeout	28	00 to FF
Load Factory Opt.		
Option Set #1	8A	00
Option Set #2	8A	01
Option Set #3	8A	02
Option Set #4	8A	03
Network Address Lock		
Network Addr. Unlock	C3	00
Network Addr. Lock	C3	01
Front Panel En/Dis		
Disable	AA	00
Enable	AA	01

Time/Date

View /set the current time and date. Entering this information is only necessary for the Weekend and Time of Day Lockout features.



The DSU IV ESP has been tested for year 2000 compliance.

Software Revision

View the current revision of the software installed in the DSU IV.

LAN MAC Address

View the LAN MAC address. This address is available when the ESP ethernet option card is installed.

Serial Number

View the DSU IV's serial number.

Chapter 12

Testing and Troubleshooting

TEST OVERVIEW

The DSU IV ESP performs a variety of diagnostic functions that isolate portions of the circuit to identify the problem source. Tests may be initiated and terminated through the front panel, VT 100 terminal, SNMP, or TELNET. In asynchronous mode, AT commands can control the testing from the DTE interface. For synchronous operation, V.25 bis commands can provide test control.

The unit also responds to standard DDS network tests initiated from telco test centers. In addition, it can run several tests such as local and remote loopbacks to aid in problem isolation. See Figure 12-1.

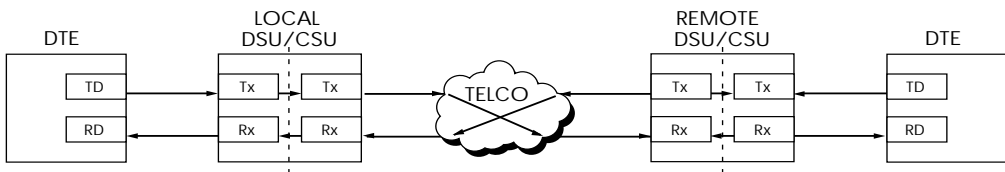


Figure 12-1

Normal Operation Before Initiating Loopback Test



All diagnostic tests disrupt data flow.

Initiating a Test

Initiate tests using the following procedure:

1. Select Test from the Main menu by pressing **2**, then press **Enter**.
2. Specify local, remote, or DBU testing by selecting the corresponding number, followed by **Enter**.
3. Use the **Up** and **Down** arrows to view test options.
4. Select a test from the available options by pressing the corresponding number, followed by **Enter**.

The example in Figure 12-2 shows the menu path for initiating a local DTE and Loop test.

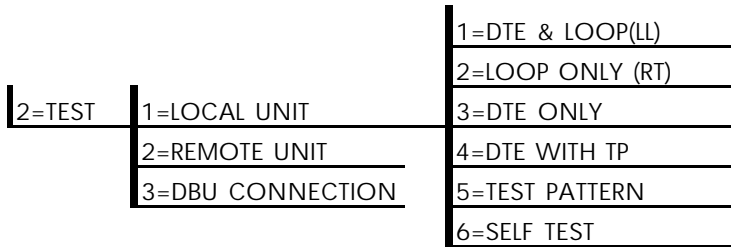


Figure 12-2
Initiating a Test

Once a test is initiated, **Please Wait** is displayed briefly, followed by the status screen.

Test Status Display

The Test Status display appears automatically during a test. The Test Status display is similar to the status screen described in the chapter *Status*, with additional prompts for the type of test and the number of errors (for tests with a test pattern).

Figure 12-3 shows an example of a Test Status Display for a test with a test pattern.

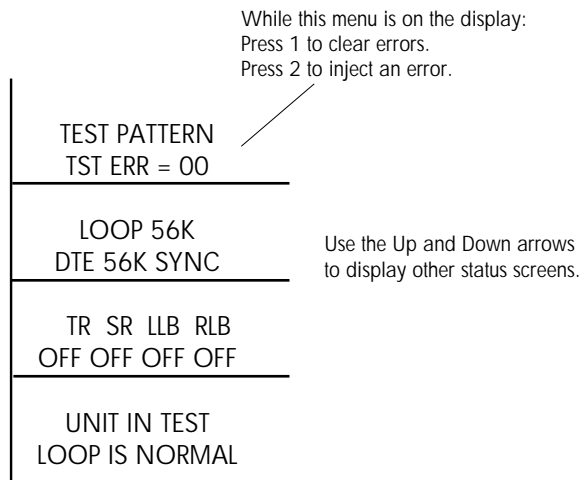


Figure 12-3
Sample Test Status Displays

Exiting a Test

During a test, press **Quick** to access the Exit Test/Display Status menu or press **Cancel** to return to the Main menu. The Exit Test/Display Status menu provides the following options, which are available only after a test has been initiated (see Figure 12-4):

Exit Test	Exits the current test and returns to the Main menu.
Display Status	Reenters test display.

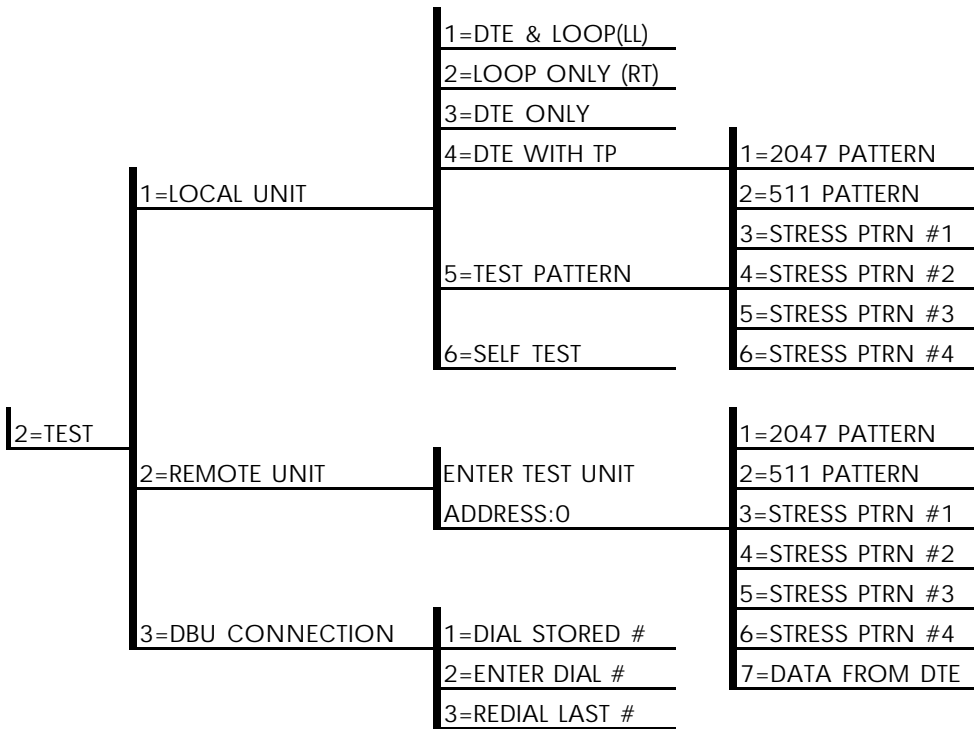


Figure 12-4
Complete Test Menu

TROUBLESHOOTING

This section is intended to provide a quick and easy means of diagnosing suspected problems associated with local or remotely attached ADTRAN DSU/CSUs.

Messages from the DSU/CSU

Messages on the LCD display and LEDs gives information concerning the status of the unit and the local loop. If the Alarm LED is *On*, one or more of the messages shown in Table 12-A are displayed on the LCD.



*The Status menu must be selected in order for the unit to display status messages. Pressing **Quick** returns to the Main menu where **STATUS** can be selected.*

Table 12-A
Messages from the DSU/CSU

Message	Meaning	Probable Cause	Action
LOOP IS NORMAL	Good local loop signal being received from the telco.	Indicates good local loop.	No action required; unit properly connected to telco circuit.
OPEN LOOP	Unit not receiving a signal from the telco.	Bad telco cable from the DSU to telco jack or bad circuit to telco.	Replace telco cable from DSU to wall jack. If a problem persists, contact telco provider.
NO RX SIGNAL	Unit detects sealing current but no data signal from telco.	Bad conductor in telco cable from DSU to telco jack or bad circuit to telco.	Replace telco cable from DSU to wall jack. If a problem persists, contact telco provider.
OOS/OOF FROM NET	Unit detects an out-of-service or out-of-frame condition from the telco.	Telco is having problems with DDS circuit or remote unit is turned off or disconnected.	Check remote unit. Contact telco service provider.
CHECK TELCO LINE	Transmit/receive pair reversal detected.	Telco wall jack wired incorrectly.	Switch wire pairs in wall jack or contact telco service provider.
TEST FROM TELCO	Telco activated a loopback to test the DDS circuit.	Telco is testing circuit.	Wait until test is complete or contact telco service provider.

Troubleshooting New Installs

Before initiating diagnostics on a newly installed unit and/or DDS circuit and before contacting ADTRAN Technical Support, please check the items in Table 12-B to ensure the unit is configured properly.

After verifying the items listed in Table 12-B, the unit should operate properly and display the following:

**DATA MODE
LOOP IS NORMAL**

If a status message other than **DATA MODE LOOP IS NORMAL** is shown, begin performing diagnostics described in the section *Test Sequence for Troubleshooting New Installs or Existing Circuits*.

Table 12-B
Troubleshooting New Installs

Configuration Item to Check	Option Selection	Action
DTE Type	EIA-232 or V.35	From the Configuration menu, select the type of DTE interface option to connect to the DSU/CSU.
Loop Rate	Auto, 2.4 to 64 kbps	From the Configuration menu, select the DDS loop rate of the DDS circuit.
Data Format	Async or Sync	From the Configuration menu, select the type of data to be used.
DTE Cable	N/A	Verify DTE cable connection to the proper DTE connector on the DSU/CSU.
Telco Cable	N/A	Verify the telco cable is securely connected to the DSU/CSU and wall jack.
Power the unit Off and then On.	N/A	Verify the unit passes self test during power-up (displayed on the LCD).

Test Sequence for Troubleshooting New Installs or Existing Circuits

If your DSU is suspected of having problems, perform a **Self Test** to determine whether the unit is in good health.

If your DSU is receiving excessive errors requiring retransmission of data, first perform a **DTE with Test Pattern** to determine whether the unit's internal transmitter and receiver are operating error free. If problem persists, perform a **Remote Test** to verify the connection between the local and remote unit is error free. Run the test using all available test patterns.



If an external BERT tester is available, these additional tests may be performed:

- *DTE & Loop Test*
- *DTE Only Test*
- *Loop Only Test*

If the unit fails any of these tests or the problem has not been determined, contact ADTRAN Technical Support; see inside back cover.

LOCAL UNIT DIAGNOSTICS

The local DSU IV ESP can perform six different tests; see Table 12-C.

Table 12-C
Test AT Commands

Front Panel Display	AT Command	Description
DTE & Loop (LL)	&T10	TD/RD and RX/TX Loopbacks
Loop Only (RT)	&T11	RX/TX Loopback at Network Interface
DTE Only	&T1	TX/RX Loopback at DTE Interface
DTE with TP	&T8	TX/RX Loopback with Test Pattern
Test Pattern	&T9	Transmit/Receive Test Pattern
Self Test	Z	Check Internal Components (Resets Unit)
Exit Test	&T0	Stops test, returns to data mode
TD = Customer Transmit Data RD = Customer Receive Data TX = Network Transmit Data RX = Network Receive Data		

The test patterns shown in Table 12-D are available for the DTE with Test Pattern and Test Pattern tests.

Table 12-D
DTE With Test Pattern Commands

Front Panel	AT Command	Description
1=2047 PATTERN	_T0&T8	Standard 2047 random data pattern.
2=511 PATTERN	_T1&T8	Standard 511 random data pattern.
3=STRESS PTRN #1	_T2&T8	Stress pattern with alternating high and low ones densities. Repeated pattern of 100 octets: 1111 1111, followed by 100 octets: 0000 0000.
4=STRESS PTRN #2	_T3&T8	Stress pattern with alternating medium and low ones densities. Repeated pattern of 100 octets: 0111 1110, followed by 100 octets: 0000 0000.
5=STRESS PTRN #3	_T4&T8	Stress pattern with medium ones density. Continuous series of octets: 0011 0010.
6=STRESS PTRN #4	_T5&T8	Stress pattern with low ones density. Continuous series of octets: 0100 0000.

DTE & Loop (LL)

The DTE & Loop test splits the DSU IV ESP into two separate DTE and loop interface sections and then loops the receive data of each interface back to its respective transmit data. The DTE & Loop test provides a bidirectional loopback at the DSU/CSU. Figure 12-5 illustrates the loopback points and the signal paths for this test.

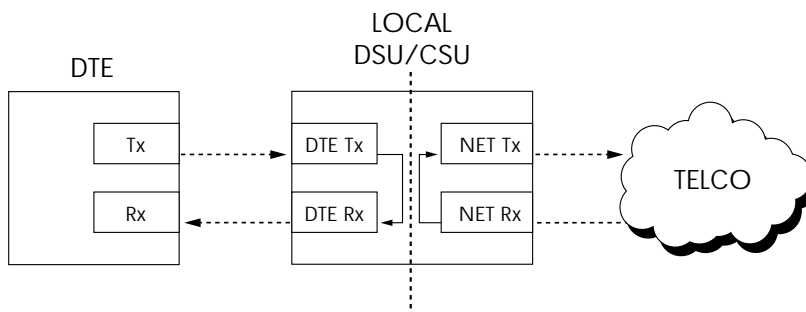


Figure 12-5
DTE & Loop Test

Test Purpose

The DTE & Loop test is used for the following purposes:

- Verify integrity of the DTE interface and cable.
- Provide a loopback for network tests.

Interpreting Test Results

A BERT tester must be used to interpret the test results of a DTE & Loop test.

Loop Only (RT)

The Loop Only (RT) test allows the loop interface and a major portion of the DTE interface for the local DSU IV ESP to be tested from the remote site over the actual communication circuit. Figure 12-6 illustrates the loopback point and the signal paths for this test.

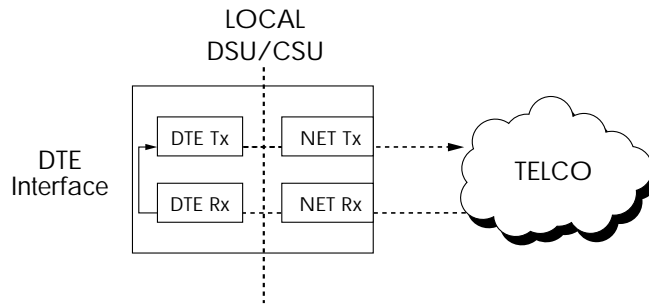


Figure 12-6
Loop Only Test

Test Purpose

The Loop Only test is used to provide a loopback for network tests.

Interpreting Test Results

The Loop Only test is used for the purpose of looping the DDS circuit back to the telco. No test results are available from the local DSU IV ESP.

DTE Only

The DTE Only test provides a method for testing both the DTE interface drivers and receivers of the local DSU IV ESP plus its loop transmitter and receiver. For this test, the loop transmit data is connected to the loop receive data at a point close to the physical network interface. This test can be used to verify proper operation between the local DTE and the local DSU IV ESP.



When this test is implemented, the far unit receives an OOS/OOF message from the network and enters an alarm state.

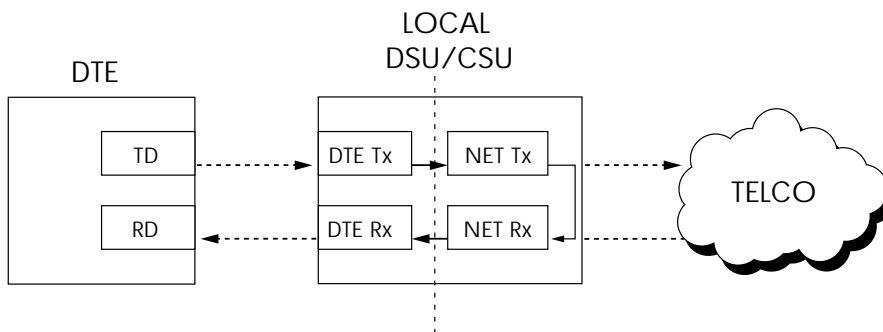


Figure 12-7
DTE Only Test Diagram

Test Purpose

The DTE Only test is used for the following purposes:

- Verify integrity of the DTE interface.
- Verify integrity of connection between DTE and DSU IV ESP.

Interpreting Test Results

A BERT tester must be used to interpret the test results of a DTE Only test.

DTE With Test Pattern

The DTE with TP (test pattern) test is similar to the DTE Only test described previously except the test pattern is generated using the DSU/CSU internal test pattern generator. This test can be used to detect deficiencies within the internal drivers and receivers of the DSU IV ESP. Figure 12-8 illustrates the loopback point and the data paths for this test.

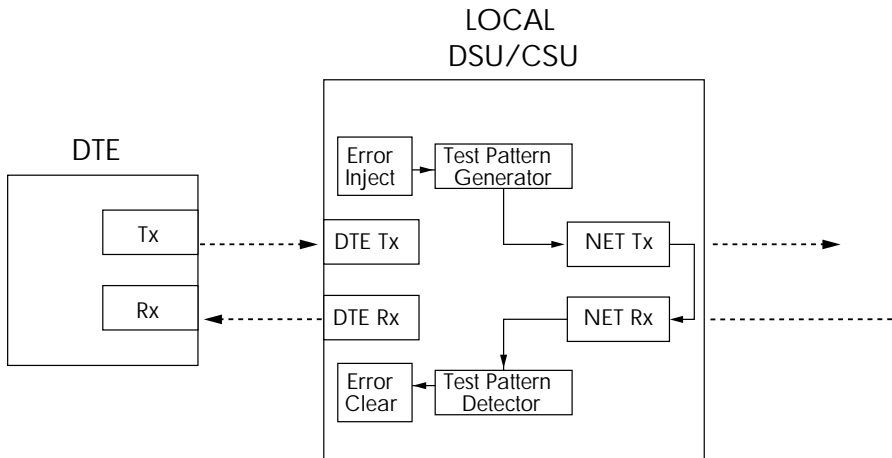


Figure 12-8
DTE with Test Pattern

Test Purpose

A DTE test using a test pattern is used for the following purposes:

- Verify integrity of the DTE interface.
- Verify integrity of connection between DTE and DSU IV ESP.

Interpreting Test Results

If the unit is functioning properly, the DSU IV ESP displays:

**DTE WITH TP
TST ERR=XX**

The first line of the display indicates the type of test being performed, while the second line of the display indicates the number of errors accumulated by the test pattern detector.

If errors occur during this test, the test error count can be reset to zero by pressing **1**. To verify proper operation of this test, single bit errors can be injected into the transmitted test pattern by pressing **2**. These errors appear on the TEST ERR display.

Test Pattern

The Test Pattern option converts the local DSU IV ESP into a BERT tester for the purpose of testing the DDS circuit. If this test is used, the remote DSU/CSU must be in loopback or transmitting a test pattern. Figure 12-9 illustrates the data paths for this mode.

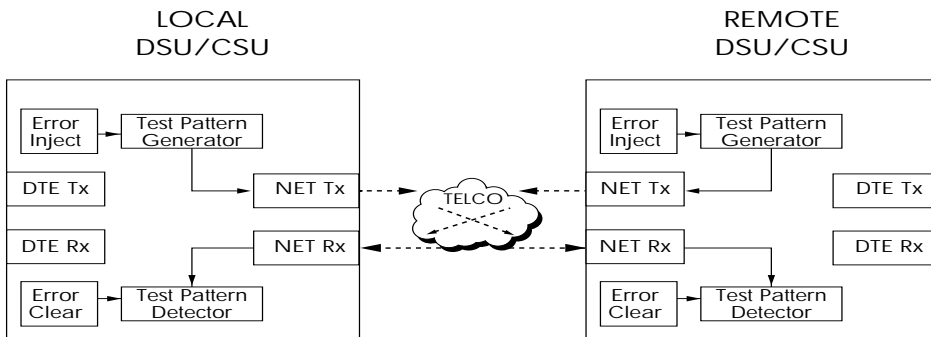


Figure 12-9
Test Pattern Only

Test Purpose

Testing using a test pattern is used for the following purposes:

- Transmits user-selected test pattern using an internal test pattern generator, and compares the received data using internal test pattern detector to detect if there are any errors on the DDS circuit.
- Injects errors and verifies the unit transmits data across the communication circuit to the remote unit.
- Helps determine from which direction the circuit is receiving errors.

Interpreting Test Results

If the unit is functioning properly, the test error count should be 0.

Self Test

The Self Test verifies current operation of the DSU IV ESP. It can be performed at any time and is recommended if there is any question about the DSU's health.

Test Purpose

The purpose of this test is to determine if the DSU is functioning properly.

Interpreting Test Results

Once Self Test is activated, the LEDs cycle on and off as the system runs the self test. A pass or fail status will be displayed on the LCD along with a checksum indicating the current firmware revision.

REMOTE UNIT DIAGNOSTICS

A remote DSU IV ESP can perform seven different tests; see Table 12-E.

Table 12-E
Remote Tests and AT Commands

Front Panel	AT Command	Description
1=2047 PATTERN	_T0&T7	Standard 2047 random data pattern
2=511 PATTERN	_T1&T7	Standard 511 random data pattern
3=STRESS PTRN #1	_T2&T7	DDS Stress Pattern #1
4=STRESS PTRN #2	_T3&T7	DDS Stress Pattern #2
5=STRESS PTRN #3	_T4&T7	DDS Stress Pattern #3
6=STRESS PTRN #4	_T5&T7	DDS Stress Pattern #4
7=DATA FROM DTE	&T6	Data from DTE

The Remote Unit submenu allows a remotely installed DSU to be placed into loopback. There are six test patterns to choose from or Data from the DTE may be selected.

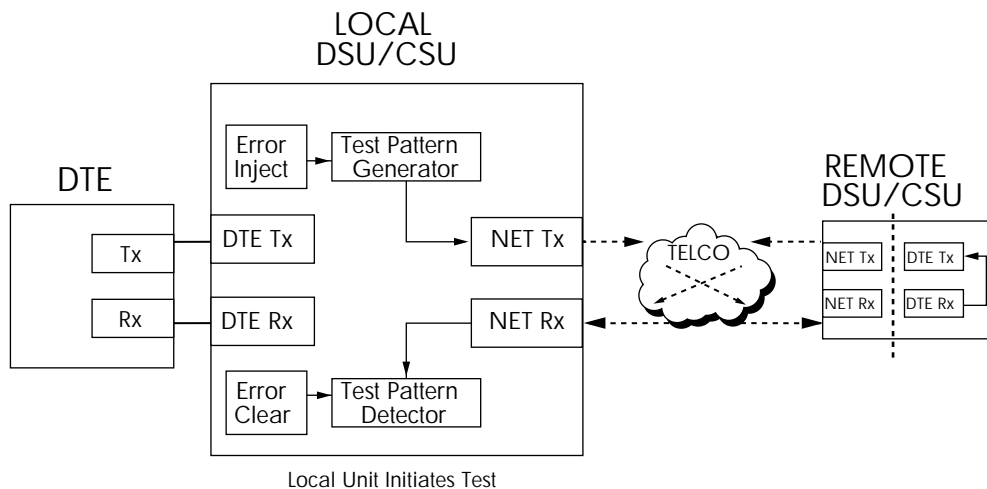


Figure 12-10
V.54 RDL with Test Pattern

Test Purpose

The test purpose is to test the local DSU, the DDS circuit, and the remote DSU.

Initiating

Follow the menu path outlined in Figure 12-11 to place a remote DSU IV ESP into loopback.

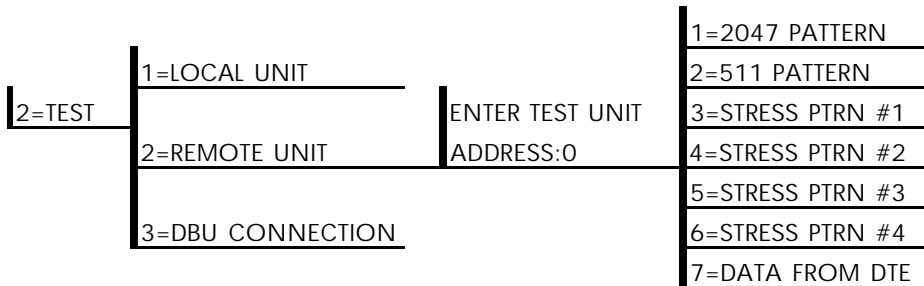


Figure 12-11
Initiating a Remote Test

After selecting Remote Unit from the menu, the following prompt is displayed for entering the address for the remote unit:

**ENTER TEST UNIT
ADDRESS:XX**

Use the number keys to type the address of the remote DSU, then press **Enter**. The test pattern selections are displayed. After a test pattern is selected, the system briefly displays **Please Wait**.

Test Results

If the test is successful the status menu is displayed. If not, **Unable to Execute Test** is displayed.

Interpreting Test Results

If the unit is functioning properly, the test error count should be 0.

DBU CONNECTION

When the DSU IV ESP is equipped with a dial backup option, the DBU Connection option appears as one of the Test menu selections. This test allows the dial backup network to be tested while data is transmitted on the main line.

When this option is selected, choose a stored number, enter a number to dial, or redial the last dialed number. After establishing DBU connection, the DSU IV ESP designated at the answer unit is placed into loopback and a test pattern is transmitted from the originate unit to the answer unit. Receive data is checked for errors and the results displayed on the front panel. While running this test, errors may be injected by pressing **2** and cleared by pressing **1**. During the DBU test, the Test LED is *On*.



When running at a subrate over a 56k or 64k loop (or a 64k loop with Scrambler activated), the DSU will not send data during a DBU test.

The DBU Answer Test option must be enabled. Enabling DBU Answer test does not affect the unit during dial backup.

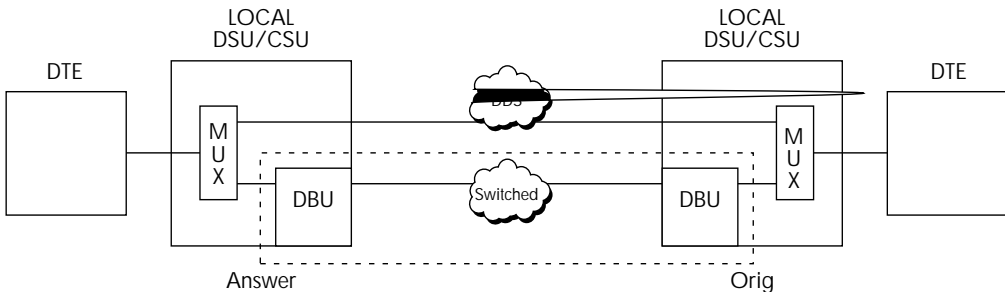


Figure 12-12
DBU Connection Test

Test Purpose

The purpose of this test is to verify the DBU circuit and DBU modules in both the local and remote DSU IV ESP are functioning properly.

Initiating

Follow the menu path outlined in Figure 12-13 to initiate a DBU connection test.

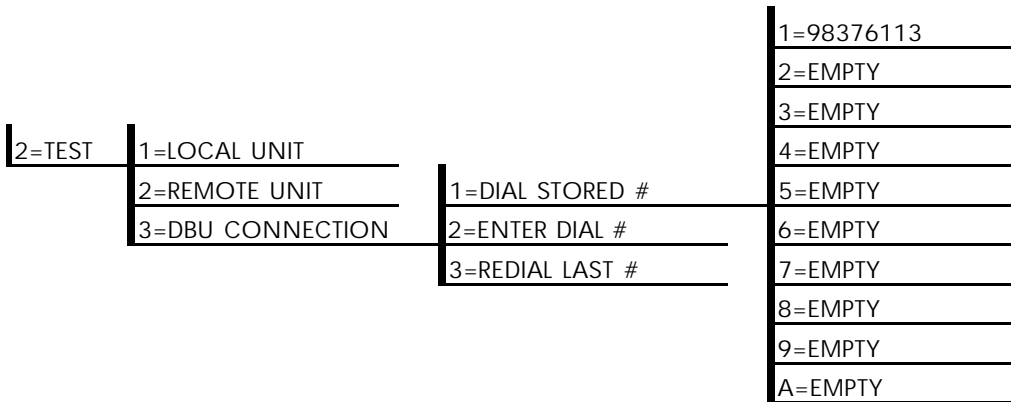


Figure 12-13
Initiating a DBU Connection Test

Interpreting Test Results

If the unit is functioning properly, the DSU IV ESP displays:

**DBU TEST PATTERN
TST ERR = 0000**

Chapter 13

Activating Dial Functions

DIAL OPTIONS

The dial options available from the Main menu (4=Dial) vary depending on the network type selection (3=CONFIG, 1=NETWORK OPT, 4=NETWORK TYPE). If AT&T/MCI SW56 or US SPRINT SW56 is selected, the options appear as shown in Figure 13-1. If DEDICATED is selected and a DBU card is installed, the options appear as shown in Figure 13-2.

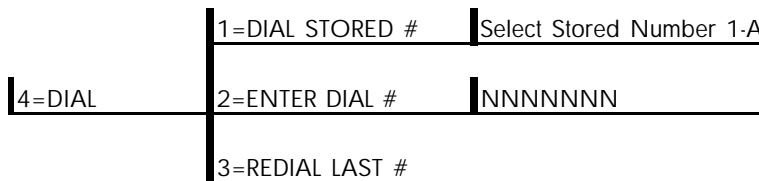


Figure 13-1
Dial Options Menu (SW56)

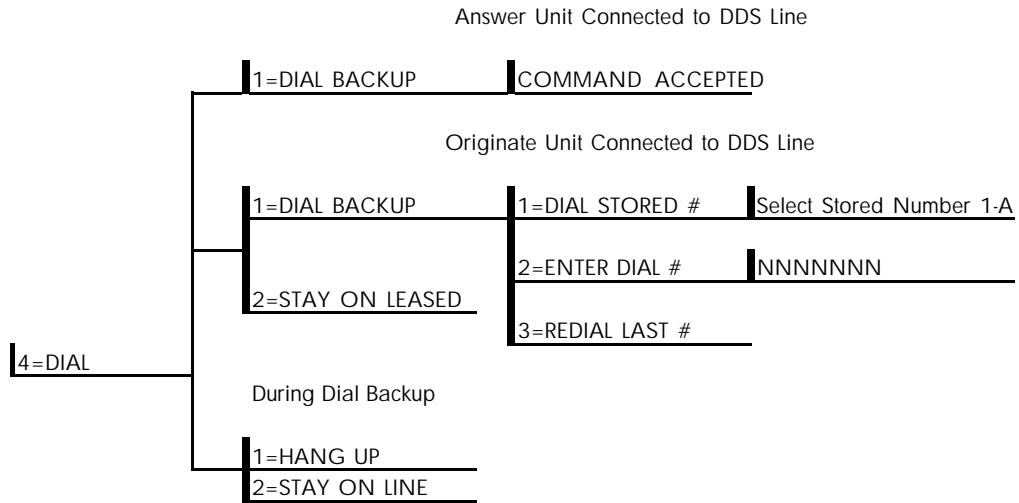


Figure 13-2
Dial Options Menu (Dedicated)

Answer Unit Connected to DDS Line

Dial Backup

The message **COMMAND ACCEPTED** is displayed and the DSU IV ESP waits for an incoming call. When an incoming call is detected, the DSU IV ESP answers the call and enters dial backup.

Originate Unit Connected to DDS Line

Dial Backup

The DSU IV ESP prompts to dial a stored number or enter a number to dial for dial backup.

Stay on Leased

The DSU IV ESP remains on the leased line and does not enter dial backup mode.

Dial Options During Dial Backup

Hang Up

Terminates the dial backup connection and attempts to reestablish communication on the DDS line.

Stay On Line

This DSU IV ESP remains in dial backup mode and returns to the Status menu.

Chapter 14

Viewing Status Information

STATUS

The status selection displays two lines of the current operational status of the network and the DTE interfaces.

After 30 seconds of no front panel operation the DSU IV ESP automatically reverts to the Status display; see Figure 14-1.

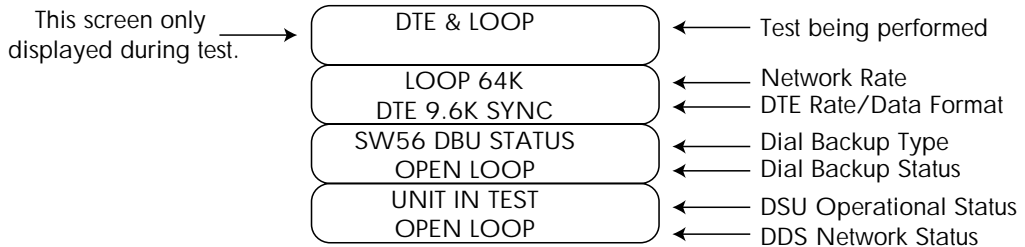


Figure 14-1
Status Display

Network Rate, DTE Rate, and Data Format

This display line (see Figure 14-1) indicates the current loop rate on the first line. The DTE data rate and format (as selected in configuration) are shown on the second line.

Dial Backup Information

Type of Dial Backup Service

This display line (see Figure 14-1) indicates the type of dial backup service installed in the DSU IV ESP. The following messages are displayed according to the dial backup option installed in the DSU IV ESP:

ISDN DBU Status	1 B+D Basic Rate ISDN backup option installed.
SW56 DBU Status	4-wire Switched 56 backup option installed.
V.34 DBU Status	V.34 backup option installed.
DBU Status Not Installed	No backup service option card installed in the DSU IV ESP unit.

Current Status of Dial Backup Mode

This display line (see Figure 14-1) indicates the backup service status. Possible messages include the following:

Answering Call	The DSU IV ESP detected an incoming call message and is initiating call setup procedure.
Call Disconnect	Call disconnect message received from the remote end.
Called Unit Busy	The unit called is currently busy and cannot be connected (ISDN only).
Dialing	The unit is dialing the selected number.

Going to DBU	The DSU IV ESP is entering dial backup mode.
Idle	Messages are not being transmitted but the service is immediately available for use.
Incoming Call	Incoming call messages being received.
In Dial Backup	The DSU IV ESP is currently in dial backup mode.
No RX Signal	Sealing current detected but no data signal received from telco. Also indicates ISDN line is inactive.
No wink from CO	Switched 56 provider encountered a service problem (4-wire SW56 only).
Not Installed	No dial backup option installed in the DSU IV ESP.
OOS/OOF From Net	Out-of-service signal or out-of-frame condition exists. The call cannot be completed because the called terminal or the called terminal's access line is out of service or is faulty (4-wire SW56 only).
Open Loop	The physical connection to the backup line has been broken (4-wire SW56 only).
DBU Line in RDL	Remote end initiated a test.
Test From Telco	The network provider has activated the CSU loopback (4-wire SW56 only).
DBU Test Pattern	The DSU IV ESP is currently performing a test with a pattern.
Waiting for Call	The originating DSU IV ESP is waiting on a call from the remote end.

Inactive	A DBU card is installed but the DSU IV ESP is set to SW56 mode.
Getting TEI	The ISU card is getting its first terminal endpoint identifier from the network.
Register SPID	The ISU card is registering its first SPID with the network.

DSU Operation and Network Status

Current DSU IV ESP Status

This display line (see Figure 14-1) indicates current DSU IV ESP status. Possible messages are:

Data Mode	In data mode, the data set ready (SR) and request to send (RTS) circuits are on, and the DSU IV ESP is ready to send data.
Unit in Test	The DSU IV ESP is currently in test mode; use the Arrows to scroll through the menus to display the type of test being performed.

Current DDS Network Status

This display line (see Figure 14-1) displays the status of the main telco line. For normal operation this should display **LOOP IS NORMAL**; other possible messages are described as follows:

Answering Call	The DSU IV ESP detects an incoming call.
Check Telco	The transmit and receive (Tx/Rx) pairs of the loop connection are reversed. The pairs should be swapped for normal operation.
Going To DBU	This message is displayed briefly while switching from the dedicated service to dial backup mode.

In Dial Backup	The DSU is in dial backup mode.
LL Test From Telco	An LL test has been initiated from the telco.
Loop is Normal	The DSU is connected to the dedicated line.
OOS/OOF	The telco is transmitting an out-of-service code.
Open Loop	The DDS physical connection has been broken.
Waiting for Call	The DBU module is waiting for a call.

DTE Control Leads and Status

Four additional DTE interface leads are displayed with their current status (on or off) displayed below. The leads are identified as follows:

TR - Data terminal ready
SR - Data set ready
LLB - Local loopback
RLB - Remote loopback.

Appendix A

Pinouts

The following tables give the pin assignments for the connectors located on the back of the DSU IV ESP, the DBU cards, and the ESP ethernet card. For more information on the connectors, see the chapter *Installation*.

Table A-A
Pin Assignments for Telco Connector

Pin	Name	Description
1	R1	Transmit Data from DSU to Network-Ring 1
2	T1	Transmit Data from DSU to Network-Tip 1
3-6	-	Not Used
7	T	Receive Data from Network to DSU-Tip
8	R	Receive Data from Network to DSU-Ring

Table A-B
Pin Assignments for ESP DBU Card Connectors

Pin	Name	Description
4-wire Switched 56		
1	R1	Transmit Data from DSU to Network-Ring 1
2	T1	Transmit Data from DSU to Network-Tip 1
3-6	-	Not Used
7	T	Receive Data from Network to DSU-Tip
8	R	Receive Data from Network to DSU-Ring
V.34 and 1B+D ISDN		
1-3	-	Not Used
4	T	Network-Tip
5	R	Network-Ring
6 - 8	-	Not Used

Table A-C
Pin Assignments for Primary EIA-232 Connector

Pin	EIA	Description
1	AA	Protective Ground (PG)
2	BA	Transmit Data (SD)
3	BB	Receive Data (RD)
4	CA	Request-to-Send (RS)
5	CB	Clear-to-Send (CS)
6	CC	Data Set Ready (SR)
7	AB	Signal Ground (SG)
8	CF	Received Line Signal Detector (CD)
9	-	+12 Test Point
10	-	-12 Test Point
15	DB	Transmit Clock (TC)
17	DD	Receive Clock (RC)
18	-	Local Loopback (LL)
20	CD	Data Terminal Ready (TR)
21	-	Remote Loopback (RL)
22	CE	Ring Indicator (RI)
24	DA	External TX Clock (ETC)
25	-	Test Indicator (TI)

Table A-D
Pin Assignments for Primary V.35 Connector

Pin	CCITT	Description
A	101	Protective Ground (PG)
B	102	Signal Ground (SG)
C	105	Request to Send (RTS)
D	106	Clear To Send (CTS)
E	107	Data Set Ready
F	109	Received Line Signal Detector (CD)
H	-	Data Terminal Ready (DTR)
J	-	Ring Indicator (RI)
L	-	Local Loopback (LL)
N	-	Remote Loopback (RL)
R	104	Received Data (RD-A)
T	104	Received Data (RD-B)
V	115	Receiver Signal Element Timing (SCR-A)
X	115	Receiver Signal Element Timing (SCR-B)
P	103	Transmitted Data (SD-A)
S	103	Transmitted Data (SD-B)
Y	114	Transmitter Signal Element Timing (SCT-A)
AA	114	Transmitter Signal Element Timing (SCT-B)
U	113	External TX Signal Element (SCX-A)
W	113	External TX Signal Element (SCX-B)
NN	-	Test Indicator (TI)

Table A-E
Pin Assignments for Control Connector

RJ Pin#	Function	Direction
1	GND	
2	RTS	I
3	TD	I
4	DSR	O
5	RD	O
6	CTS*	O
7	not used	not used
8	not used	not used

*Used for hardware flow control.

Table A-F
Pin Assignments for 10baseT Connector

Pin	Name	Description
1	TD+	The positive signal for the TD differential pair. This signal contains the serial output data stream transmitted onto the network.
2	TD-	The negative signal for the TD differential pair (pins 1 and 2).
3	RD+	The positive signal for the RD differential pair. This signal contains the serial input data stream received from the network.
4, 5	N/A	not used
6	RD-	The negative signal for the RD differential pair (pins 3 and 6).
7, 8	N/A	not used

Appendix B

AT Commands

Table B-A shows the AT commands available for the DSU IV ESP.

Table B-A
AT Commands

Command	Title	Default
A/	Re-execute Command	none
ATA	Answer	none
ATDn	Dial Number	none
ATE	Echo Command	1
ATH	Hang Up Call	none
ATO	Go Online	none
ATQn	Result Code Display	0
ATSn?	Read S-Register	none
ATSn=x	Write to S-Register	none
ATVn	Result Code From Firmware	1
ATZ	Self Test	none
AT&Cn	CD Option	0
AT&Dn	TR Option	0
AT&Fn	Restore Factory Options	none
AT&Ln	Network Type	0
AT&Pn	Remote Configuration	
AT&Qn	DTE Data Format	0
AT&Rn	CS Options	0
AT&Sn_Cn	SR Options	0

Table B-A (Cont'd)
AT Commands

Command	Title	Default
AT&Zn=x	Store Phone Number	none
AT\Nn	Error Control (V.34 DBU)	0
AT\On	Flow Control (V.34 DBU)	
AT\Tn	Inactivity Timer	
AT%Bn	Loop Rate Select	0
AT%Cn	Compress Option (V.34 DBU)	0
AT%Kn	DTE Rate Select	
AT%P	Password Control	0
AT%P=x	Password Entry	0
T%P>x	Password Verify	0
AT%Rx	Initiate Remote Config.	
AT%Tn	Anti-stream Option	0
AT_An	LLB Control	0
AT_Bn	DBU Number to Dial	0
AT_Cn	SR Control During Test	0
AT_Dn	RTS-CTS Delay	0
AT_En	DBU Originate/Answer	0
AT_Fn	Scrambler Control	0
AT_Gn	DBU When OOS	0
AT_Hn	DBU When No RX Signal	0
AT_In	DBU When No Sealing Current	0
AT_Jn	Auto Answer Enable/Disable	0
AT_Kn	DBU Enable/Disable	0
AT_Ln	DTE Routing Main/Backup	0
AT_N=xx	Set Network Address	none
AT_Pn	Front Panel Enable/Disable	0
AT_Rn	RLB Enable/Disable	0
AT_S=xx	Set Serial Number	none
AT_Tn	Select Test Pattern	0
AT_Xn	Clock Source Select	0
AT_Yn	Secondary Channel Rate Select	0

Appendix C

Terminal Menu Structure

This appendix describes the terminal menus used when managing the DSU IV ESP through either a VT 100 terminal interface or a TELNET session. Examples of the terminal screens as well as a menu tree (Figure C-2) are provided.



Due to the increased display capabilities, the VT 100 menu structure differs from the front panel interface. Descriptions of individual menu options are provided throughout this manual based on the front panel menu structure. See Figure 5-1 for the front panel configuration menu tree.

TERMINAL INTERFACE MAIN MENU

The terminal Main menu is the opening menu to all operations of the DSU IV. Select one of the choices by pressing the corresponding number; then press **Enter**. See Figure C-1.



The Dial selection in the terminal Main menu is determined by two things: the Network Type selected in the Configuration menu and the presence/absence of a DBU card. See Table C-A.

Table C-A
Terminal Main Menu Dial Selection

Network Type Selected	DBU Card	Sixth Selection
DEDICATED	installed	DIAL ESP DBU
SW56	N/A	DIAL SW56
DEDICATED	not installed	no selection available

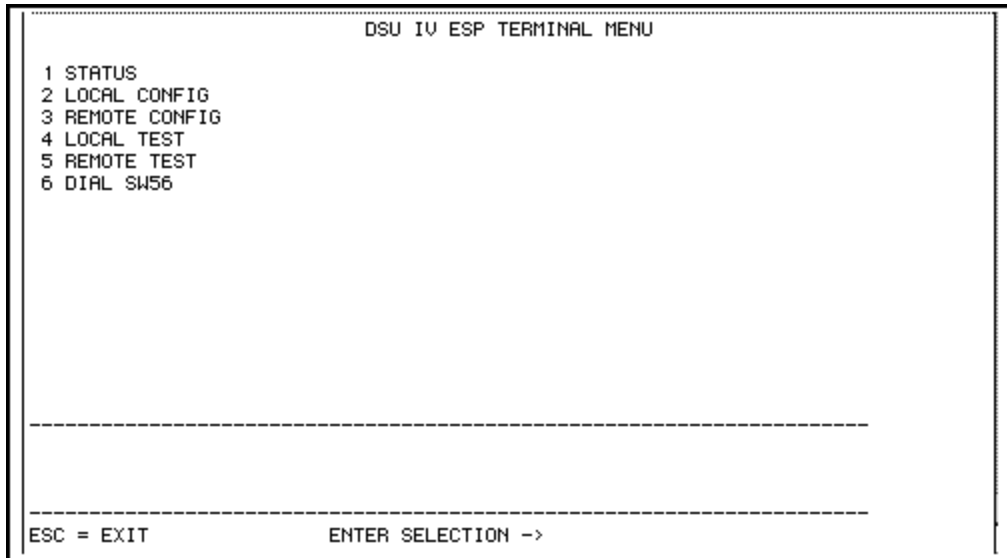


Figure C-1
Terminal Interface Main Menu (SW56 Network Type Selected)

page holder for figure C-1

Status Menus

Status menus display all relevant information for the network and DTE interfaces. For more information, see the chapter *Viewing Status Information*. See Figure C-3.

```
-----
                        DSU IV ESP STATUS
UNIT/LOOP STATUS          DTE LEADS
  LOOP RATE = SWITCHED 56K      RTS = OFF
  DTE RATE = 57.6K             CTS = OFF
  DTE FORMAT = ASYNC           TD = OFF
  TEST STATUS = NO TEST        RD = OFF
  SELF TEST = PASS             DCD = OFF
  SOFTWARE REV = BETA A        DSR = OFF
  CHECKSUM = 1132              DTR = OFF
  DBU TYPE = NONE              LL = OFF
  LOOP STATUS = OPEN LOOP      RL = OFF
  SW56 DIALING STATUS = IDLE
  NUM DIALED =

-----
ESC = EXIT
```

Figure C-3
Status Menu

Local/Remote Configuration Menus

When Local Configuration is selected, the screen in Figure C-5 appears. For Remote Configuration, the remote address must be entered through the menu shown in Figure C-4. After entering the address, the menu in Figure C-5 appears.

```
DSU IV ESP  REMOTE CONFIG OPTIONS

1 REMOTE ADDRESS = 0
2 EXECUTE REMOTE CONFIG

-----

-----
ESC = EXIT          ENTER SELECTION -> _
```

Figure C-4
Remote Configuration Options

```
.....
                                DSU IV ESP CONFIGURATION MENU
1 DSU
2 DIAL BACKUP
3 DIAL DIRECTORY
4 MANAGEMENT
5 UTILITY

-----

-----
ESC = EXIT                ENTER SELECTION -> _
```

Figure C-5
Main Configuration Menu

DSU Configuration (DTE, Network, and Test options)

The chapters *Configuring Network Options*, *Configuring DTE Options*, *Configuring Test Options*, and *Configuring Dial Options* include detailed descriptions of these parameters. See Figure C-6.

```
.....
DSU IV ESP DSU CONFIGURATION

DTE OPTIONS                                NETWORK/TEST/COMMAND OPTIONS
1 DTE RATE(@56K/64K) = SAME AS LOOP      14 LOOP RATE = AUTO
2 CONNECTOR TYPE = U.35                  15 NETWORK ADDRESS = 0
3 DTE DATA FORMAT = SYNCHRONOUS         16 NETWORK TYPE = DEDICATED
4 ASYNC WORD LENGTH = 10 BITS            17 CLOCK SOURCE = FROM NETWORK
5 DTE CMD SET = DIS                       18 TEST TIMEOUT = 0
6 TRANSMIT CLOCK = NORMAL                 19 REMOTE TEST = EN
7 CS CONTROL = FOLLOWS RS                 20 LL EIA = DIS
8 RS-CS DELAY = SHORT                     21 RL EIA = DIS
9 ANTI-STREAM = TIMER OFF                 22 REMOTE CONFIG = EN
10 CD CONTROL = NORMAL                    23 SW56 AUTO ANSWER = EN
11 TR CONTROL = IGNORED
12 SR CONTROL = OFF TEST+OOS
13 SCRAMBLE(64K) = OFF

-----

-----

ESC = EXIT                                ENTER SELECTION -> _
```

Figure C-6
DSU Configuration Menu

DBU Configuration

This menu changes depending on which DBU card is installed. See the chapter *Configuring Dial Options* for more information. The menu for the S4W DBU card is shown in Figure C-7.



If DBU Configuration is selected when no DBU card is installed, the message DSU IV ESP DBU NOT INSTALLED appears. Press the ESC key to return to the previous screen of selections. If this message is received when a card is installed, ensure that the card is properly seated in the slot and then restart the unit.

```

DSU IV ESP S4W DIAL BACKUP

DBU OPERATION                                DBU CRITERIA
 1 DBU PASSCODE = 123                        11 DBU EN/DIS = DIS
 2 PASSCODE = DIS                            12 W/OOS = DIS
 3 NUM TO DIAL = NUM 1                       13 W/NO RX = DIS
 4 ORG/ANS = ANS                             14 W/NO SEAL CURR = DIS
 5 AUTO RESTORE TIMER = 1                    15 ALL 1s/0s = DIS
 6 REDIAL COUNTER = 5                        16 ANSWER ALLWAYS = DIS
 7 FAIL COND TIMER = 3                       17 WEEKEND LOCKOUT = DIS
 8 WAIT TO REDIAL = 10                       18 DAILY LOCKOUT = DIS
 9 DBU NETWORK TYPE = US SPRINT              19 LOCKOUT EN HOUR = 17
10 DBU ONLINE TEST = DIS                     20 LOCKOUT DIS HOUR = 08

-----
-----

```

Figure C-7
S4W Dial Backup

Dial Directory Configuration

Enter/edit stored numbers See the chapter *Configuring Dial Options* for more information.

Management Configuration

Select the management interface and set the unit up to respond to the selected interface. See the chapter *Configuring Management Functions* for more information. The Management menu is shown in Figure C-8. The SNMP menu which branches from the Management menu is shown in Figure C-9.

```
DSU IV ESP MANAGEMENT

1 SNMP
2 INTERFACE = TERM
3 CONTROL RATE = 9.6K
4 IP ADDRESS = 198.79.126.59
5 SUBNET MASK = 255.255.255.000
6 GATEWAY IP ADDRESS = 192.230.230.1
7 TELNET PASSWORD = adtran
8 SESSION TIMEOUT = 10 MIN
9 IP SECURITY = DIS
10 IP FILTER ADDRESS 1 = 000.000.000.000
11 IP FILTER ADDRESS 2 = 000.000.000.000
12 IP FILTER ADDRESS 3 = 000.000.000.000
13 IP FILTER ADDRESS 4 = 000.000.000.000
14 IP FILTER ADDRESS 5 = 000.000.000.000

-----

-----

ESC = EXIT          ENTER SELECTION -> _
```

Figure C-8
Management Menu

```
DSU IV ESP SNMP

1 SYSTEM NAME = name
2 SYSTEM LOCATION = location
3 SYSTEM CONTACT = contact
4 SNMP GET COMMUNITY = public
5 SNMP SET COMMUNITY = private
6 SNMP TRAP COMMUNITY = DSUIV
7 SNMP TRAPS = GENERIC ONLY
8 AUTHENTICATION TRAPS = DIS
9 TRAP HOST IP ADDR 1 = 000.000.000.000
10 TRAP HOST IP ADDR 2 = 000.000.000.000
11 TRAP HOST IP ADDR 3 = 000.000.000.000
12 TRAP HOST IP ADDR 4 = 000.000.000.000
13 TRAP HOST IP ADDR 5 = 000.000.000.000

-----

-----

ESC = EXIT          ENTER SELECTION -> _
```

Figure C-9
SNMP Management Menu

Utility Configuration

View/set the time of day and date, view the LAN MAC address (if the ESP ethernet card is installed), enable/disable the front panel, or enter manual commands. The chapter *Configuring Unit Utilities* provides more detailed information. See Figure C-10.

```
DSU IV ESP UTILITY

1 TIME (HR:MN:SC) = 12:35:00
2 DATE (MN-DY-YR) = 03-21-99
3 SERIAL NUMBER = 123456789
4 LAN MAC ADDRESS = 000000000000
5 FRONT PANEL = EN
6 ENTER MANUAL CMD

-----

-----

ESC = EXIT          ENTER SELECTION -> _
```

Figure C-10
Utility Menu

Local/Remote Test Menus

The Local Test Options menu is shown in Figure C-11. The Remote Test Options menu is shown in Figure C-12. For information on these menu items, see the chapter *Testing and Troubleshooting*.

```
DSU IV ESP LOCAL TEST OPTIONS

 1 DTE & LOOP                10 XMIT 2047 PTRN
 2 LOOP ONLY                 11 XMIT 511 PTRN
 3 DTE LOOPBACK              12 XMIT DDS PTRN #1
 4 DTE <2047 PTRN>           13 XMIT DDS PTRN #2
 5 DTE <511 PTRN>            14 XMIT DDS PTRN #3
 6 DTE <DDS PTRN #1>         15 XMIT DDS PTRN #4
 7 DTE <DDS PTRN #2>
 8 DTE <DDS PTRN #3>
 9 DTE <DDS PTRN #4>
10 XMIT 2047 PTRN
11 XMIT 511 PTRN
12 XMIT DDS PTRN #1
13 XMIT DDS PTRN #2
14 XMIT DDS PTRN #3
15 XMIT DDS PTRN #4
16 SELF TEST

-----

-----

ESC = EXIT                ENTER SELECTION -> _
```

Figure C-11
Local Test Options Menu

```
DSU IV ESP  REMOTE TEST OPTIONS

1 REMOTE ADDRESS = 0
2 DATA FROM DTE
3 2047 TEST PTRN
4 511 TEST PTRN
5 DDS PTRN #1
6 DDS PTRN #2
7 DDS PTRN #3
8 DDS PTRN #4

-----

-----

ESC = EXIT          ENTER SELECTION -> _
```

Figure C-12
Remote Test Options Menu

Dial SW56/Dial ESP DBU

When in SW56 mode (SW56 Network Type selected), the Dial SW56 selection is shown in the Terminal Interface Main menu (see Figure C-1 and Table C-A). When a DBU ESP card is installed and the DEDICATED Network Type is selected, the Dial ESP DBU selection is shown instead.

Dial SW56 Options

This menu (see Figure C-13) is available when operating in SW56 mode. Choose to dial a stored number or enter a number manually.

```

                                     DSU IV ESP DIALING MENU
1 DIAL STORED NUMBER
2 MANUAL DIAL ENTRY

-----

-----

ESC = EXIT          ENTER SELECTION -> _
```

Figure C-13
SW56 Dialing Menu

Dial ESP DBU

This menu is available when an ESP option card is installed in the DSU IV ESP and the Network Type is set to DEDICATED. See the chapter *Activating Dial Functions* for more information on individual menu selections.

```
DSU IV ESP DBU CONTROL MENU

DBU OPERATIONS
 1 GO TO DIAL BACKUP
 2 DBU ONLINE TEST

-----

-----

ESC = EXIT          ENTER SELECTION -> _
```

Figure C-14
Dial ESP DBU Menu

Appendix D

Configuration Profiles

The DSU IV ESP contains four different user profiles (sets of configurations options) stored in read-only memory; see Table D-A. The unit is shipped from the factory with profile 1 loaded into the nonvolatile configuration memory. See the section *Manual Command* of the *Utilities* chapter for more information on entering the manual commands required to load these profiles.

Profile 1

Profile 1 is configured for a 56 kbps, synchronous, point-to-point or dial-up operation with a V.35 connector. Automatic DBU has been disabled for this configuration profile.

Profile 2

Use profile 2 for a 56 kbps, asynchronous, point-to-point or dial-up operation, with an EIA-232 connector. Automatic DBU has been disabled for this configuration profile.

Profiles 3 and 4

Profiles 3 and 4 are identical to profile 1 with the addition of dial backup capability. These profiles are used for enabling dial backup using two DSU IV ESP units. One unit must be set for Answer and the other for Originate. Use profile 3 to set the remote unit to Answer and profile 4 to set the host unit to Originate.

Table D-A
Configuration Profiles

	Profile Numbers			
	(00) 1	(01) 2	(02) 3	(03) 4
Manual Command				
Escape Character	43=2BH	43=2BH	43=2BH	43=2BH
CR Character	13=0DH	13=0DH	13=0DH	13=0DH
LF Character	10=0AH	10=0AH	10=0AH	10=0AH
BS Character	8	8	8	8
DBU Abort Call Timer	50=32H	50=32H	50=32H	50=32H
Escape Guard Timer	50=32H	50=32H	50=32H	50=32H
Command Echo	Enable	Enable	Enable	Enable
Result Code	Enable	Enable	Enable	Enable
Long or Short Code	Long	Long	Long	Long
Test Pattern Type	2047	2047	2047	2047
CS Delay	Short	Short	Short	Short
DTR Recog. Delay (x100ms)	3	3	3	3
DTR Command Timeout (x100)	8	8	8	8
Front Panel En/Dis	Enable	Enable	Enable	Enable
Inactivity Timer	Off	Off	Off	Off
AT Password Control	Disable	Disable	Disable	Disable
Network Options				
Loop Rate	AUTO	AUTO	AUTO	AUTO
Network Address	0	0	0	0
Remote Conf. En/Dis	Enable	Enable	Enable	Enable
Clock Source	From Network	From Network	From Network	From Network
DTE Options				
Remote DSU Address	0	0	0	0
DTE Rate (56k loop)	56k/57.6k	56k/57.6k	56k/57.6k	56k/57.6k
Scrambler Mode	OFF	OFF	OFF	OFF
Connector Type	V.35	RS232	V.35	V.35
DTE Data Format	SYNC	ASYN	SYNC	SYNC
DTE Command Options	DIS	DIS	DIS	DIS
Transmit Clock	Normal	Normal	Normal	Normal
CS Options	Follow RS	Follow RS	Follow RS	Follow RS
Anti-stream Timer	Timer Off	Timer Off	Timer Off	Timer Off
CD Option	Normal	Normal	Normal	Normal
TR Options	Ignored	Ignored	Ignored	Ignored
SR Options	Off Test+OOS	Off Test+OOS	Off Test+OOS	Off Test+OOS
Secondary Channel Rate	OFF	OFF	OFF	OFF

Table D-A (Cont'd)
Configuration Profiles

	Profile Numbers			
	(00) 1	(01) 2	(02) 3	(03) 4
Test Options				
Test Timeout	Off	Off	Off	Off
RDL En/Dis	RDL Accepted	RDL Accepted	RDL Accepted	RDL Accepted
EIA Controlled LLB	Disable	Disable	Disable	Disable
EIA Controlled RLB	Disable	Disable	Disable	Disable
DBU Answer Test	Disable	Disable	Disable	Disable
Dial Options				
Automatic DBU	Disable	Disable	Enable	Enable
DBU Number to Dial	#1	#1	#1	#1
DBU Originate/Answer	Answer	Answer	Answer	Originate
DBU when OOS	Enable	Enable	Enable	Enable
DBU when No RX Signal	Enable	Enable	Enable	Enable
DBU when No Sealing Current	Enable	Enable	Enable	Enable
DBU Auto Restore Timer	1 minute	1 minute	1 minute	1 minute
DBU Redial Counter	5	5	5	5
DBU Fail-Timer (x10 seconds)	3	3	3	3
DBU Redial Wait Time	10	10	10	10
When all 1s/Os	Disable	Disable	Disable	Disable
Network Type	AT&T	AT&T	AT&T	AT&T
Error Control	Auto V.42/MNP	Auto V.42/MNP	Auto V.42/MNP	Auto V.42/MNP
Flow Control (V.32)	CTS Only	CTS Only	CTS Only	CTS Only
Data Compression (V.32)	Enabled	Enabled	Enabled	Enabled

Appendix E

DSU to Modem Interconnect

MODEM TAIL CIRCUIT APPLICATION

A DSU to modem interconnect diagram for a modem tail circuit application is shown in Figure E-1.

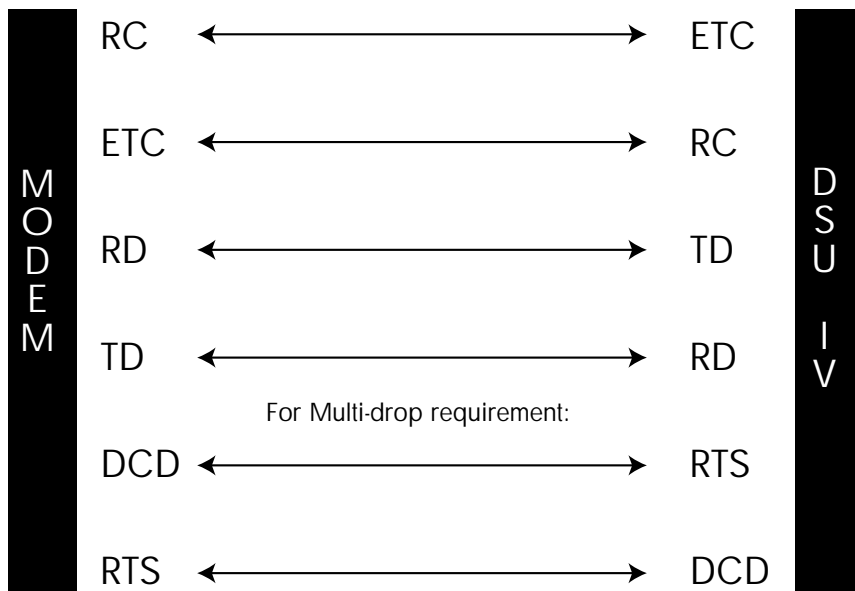


Figure E-1
DSU to Modem Interconnect

Appendix F

Specifications Summary

This section describes the standard specifications and features incorporated in the DSU IV ESP.

Operating Modes

- Dedicated DDS (point-to-point, multi-point)
- Switched 56 (4-wire)
- ISDN (1B+D)
- PSTN (V.34)

Network Data Rates

- Dedicated mode service rates: 2.4, 4.8, 9.6, 19.2, 38.4, 56, and 64 kbps.
- Switched mode service rate: 56 kbps.
- Dial Backup:
 - Switched 56 (56 kbps)
 - V.34 (2.4 - 33.6 kbps)
 - ISDN (56 or 64 kbps)

DTE Rates Provided

- DTE rates match service rates
- DTE-to-loop rate matching in both dedicated and switched modes
- Synchronous rates: 2.4, 4.8, 9.6, 19.2, 38.4, 56, and 64 kbps
- Asynchronous rates: 2.4, 4.8, 9.6, 19.2, 38.4, and 57.6 kbps

DTE Interfaces

Both EIA-232 and V.35 electrical and physical DTE interfaces

SNMP and TELNET

- Integrated SLIP/PPP port
- Physical Connector RJ-48S and DB-25
- Optional 10baseT interface with ESP Ethernet Card
- MIB II RFC 1213 complaint
- Enterprise-specific MIB
- SNMP traps

Clocking

- Normal DDS (slaved to network receive clock)
- Private network master (internal)
- Normal DDS tail circuit
- Private network master (slaved to external clock)

Switched Mode Dialing Options

- Stored number
- Front panel keypad
- DTR dialing of stored numbers
- In-band AT commands
- V.25 bis in-band dialing

Diagnostics

- Network : CSU and DSU loopbacks
- User : Local DTE and loop, remote V.54
- Test Patterns : 2047, 511, DDS stress patterns 1-4

Line Requirements

Loop transmission parameters as defined in:

AT&T PUB 62310: Dedicated DDS

AT&T PUB 4146B: Switched 56

Sprint TS 0046: Switched 56

Line Interface

RJ-48S, 4-wire, full duplex

Receiver Sensitivity

-45 dB at all rates

Agency Approvals

U.L. 1950

C-U.L. 1950

FCC Part 15, Class A

FCC Part 68

CS03

Environment

Operating Temperature: 0 to 50 °C (32 to 122 °F)

Storage Temperature: -20 to 70 °C (-4 to 158 °F)

Relative Humidity: Up to 95%, non-condensing

Hardware Specifications

Dimensions: 10.4"D x 8.0"W x 2.4"H

Weight: 4.5 lbs.

Power: 115V ac, 75 mA max

8.6 watts

Glossary

10baseT

Ethernet IEEE standard on 24 gauge unshielded twisted pair wiring, a baseband medium, at 10 megabits per second.

2047

A pseudorandom test pattern that is repeated every 2047 bits; used to test DSU/CSUs.

4-Wire Switched 56

An AT&T proprietary 56/64 kbps switched digital data service offered by telco service providers and delivered to users over four copper wires.

511

A pseudorandom test pattern that is repeated every 511 bits; used to test DSU/CSUs.

agent

The implementation of a network management protocol which exchanges network management information with a network management station.

asynchronous

A method of data transmission which allows characters to be sent at irregular intervals by preceding each character with a start bit, followed by a stop bit.

AT&T Publication 41458

An AT&T specification titled "Special Access Connections to the AT&T Communications Network," used to design compatibility into DSU/CSU products.

AT&T Publication 62310

An AT&T specification titled "Digital Data System Channel Interface Specification," used to design compatibility in DSU/CSU products.

BERT

bit error rate test. A known pattern of bits is transmitted and the errors received are counted to figure the bit error rate. The idea is to measure the quality of data transmission. The bit error rate is the ratio of received bits that are in error, relative to the number of bits received. Usually expressed in a power of 10.

CD

carrier detect. A signal generated by a modem or DSU/CSU. CD indicates its connection status. If the CD light is on, the device is speaking to another device.

clocking

An oscillator-generated signal that provides a timing reference for a transmission link. A clock provides signals used in a transmission system to control the timing of certain functions. The clock has two functions: (1) to generate periodic signals for synchronization and (2) to provide a time base.

control port

An interface to a device or system that allows users to issue commands pertaining to dialing, configuration, diagnostics, management, etc.

CPE

customer premise equipment. All telecommunications terminal equipment located on the customer premises, including telephone sets, private branch exchanges (PBXs), data terminals, and customer-owned coin-operated telephones.

CS

See CTS.

CSU

channel service unit. A DCE device used to connect a digital phone line (T1 or Switched 56 line) coming in from the phone company to either a multiplexer, a channel bank, or directly to another device producing a digital signal (for example a digital PBX, a PC, or data communications device). A CSU performs certain line-conditioning and equalization functions, and responds to loopback

commands sent from the central office. A CSU regenerates digital signals. It monitors them for problems, and provides a way of testing the digital circuit.

CSU loopback

A telco initiated test which loops the CSU portion of the DSU/CSU back to the telco and allows the telco to test the DDS circuit as well as the CSU portion of the customer's DSU/CSU.

CTS

clear to send. A signal on the DTE interface indicating that the DCE is clear to send data. Sometimes referred to as CS.

dB

decibel. A unit of measure of signal strength, usually the relation between a transmitted signal and a standard signal source.

DCE

data communications equipment. Device that provides all the functions required for connection to telephone company lines and for converting signals between telephone lines and DTE.

DDS

dataphone digital service also called digital data system. A private line digital service for transmitting data end-to-end at speeds of 2.4, 4.8, 9.6, and 56 kbps and in some cases 19.2, 38.4, or 64 kbps. The systems can use central hub offices for obtaining test access, bridging legs of multipoint circuits, and cross connecting equipment. DDS is offered on an inter-LATA basis by AT&T and on an intra-LATA basis by the Bell operating companies.

DDS Stress Patterns 1-4

A series of test patterns designed to test DDS circuits. Each pattern is designed to stress the DDS circuit in a particular manner to assure its reliability.

DSU

data service unit. A device designed to transmit and receive digital data on digital transmission facilities.

DSU loopback

A telco initiated test which loops the DSU back to the telco and is used to test the DDS circuit as well as the DSU/CSU.

DTE

data terminal equipment. In the EIA-232 standard specification, the EIA-232 is connected between the DCE and a DTE. The main difference between the DCE and the DTE is that pins two and three are reversed.

DTE to loop rate matching

A feature designed into ADTRAN DSU/CSU products that allows slower DTE devices to communicate over 56/64 kbps digital circuits.

DTR

data terminal ready. A control signal sent from the DTE to the DCE that indicates the DTE is powered on and ready to communicate. DTR dialing allows a DSU/CSU to dial a predetermined number when DTR goes high.

EIA-232

A set of standards specifying various electrical and mechanical characteristics for interfaces between computers, terminals, and modems. Defines the mechanical and electrical characteristics for connecting DTE and DCE data communications devices. It defines what the interface does, circuit functions, and their corresponding connector pin assignments. The standard applies to both synchronous and asynchronous binary data transmission.

FCC Part 15 of Class A

Radiated and conducted emissions standards set for commercial and industrial use.

FCC Part 15 of Class B

Radiated and conducted emissions standards set for residential use.

FCC Part 68

FCC rules and regulations intended to provide protection of the telephone network from harm caused by connection of equipment to the network.

in-band

Signaling (dialing, diagnostics, management, configuration, etc.) over the same channel used for data.

IP

A connectionless-mode network service protocol.

ISDN

integrated services digital network. A network architecture that enables end-to-end digital connections. The network supports diverse services through integrated access arrangements and defines a limited set of standard, multipurpose interfaces for equipment vendors, network providers, and customers. Interworking with a public switched telephone network is retained.

LAN

A privately owned network that offers high-speed communications channels to connect information processing equipment in a limited geographic area.

local DTE and loop test

A test initiated by the user that loops the DSU to the central office and back. This is used to test the local DSU's DTE and local loop.

multidrop

A communications arrangement in which multiple devices share a common transmission channel, although only one may transmit at a time.

out-of-band

Signaling that is separated from the channel carrying information (voice, data, video, etc.). Typically the separation is accomplished by a filter. The signaling includes dialing and other supervisory signals.

point-to-point

A private circuit, conversation, or teleconference in which there is one person at each end, usually connected by some dedicated transmission modem.

private network master clocking

Clocking in which timing is derived internally from the DSU.

private network tributary clocking

Clocking in which the timing is derived from the DDS loop.

private network master - slaved to external clock

Clocking in which timing is slaved to the DSU's external transmit clock.

protocol

A set of rules governing transfer of data.

PSTN

public switched telephone network. A direct distance dialing telephone network that is available for public use. The network is an integrated system of transmission and switching facilities, signaling processors, and associated operations support systems that is shared by customers. PSTN also is called public network, public switched network, or public telephone network.

RDL

remote digital loopback.

remote configuration

A feature designed into ADTRAN DSU/CSU products that allow a remote DSU/CSU to be configured from a local DSU/CSU or VT 100 compatible terminal.

remote V.54 test

A diagnostic feature that allows testing of the DDS circuit by looping the remote DSU/CSU back to the local DSU/CSU.

RJ-45

registered jack. 8-pin connector used for data transmission over standard telephone wire. Single line, 2-wire T/R, PR/PC, programmed data, 8 position, keyed.

router

A device that supports LAN-to-LAN communications.

scrambler

A device that transposes or inverts signals, or otherwise encodes a message at the transmitter, to make it unintelligible at a receiver not equipped with an appropriately set descrambling device.

SDLC

synchronous data link control. A link-level communications protocol used in an international business machines (IBM) systems network architecture (SNA) network that manages synchronous, code-transparent, serial information transfer over a link connection. SDLC is a subset of the HDLC protocol developed by ISO.

sealing current

A 4 to 20 mA direct current used by OCU DPs to reduce corrosion in the wires and to verify the connection of a device on the loop.

service

The provision of telecommunications to customers by a common carrier, administration, or private operating agency, using voice, data, and/or video technologies.

SNMP

simple network management protocol. A control and reporting scheme widely used to manage devices from different vendors. SNMP operates on top of the internet protocol.

SR

data set ready. A signal on the EIA-232 interface that indicates if communication is connected and ready to start handshaking control signals so communication can begin.

switched

In regards to DSU/CSUs, the ability to perform the functions of establishing and releasing connections on a per call basis between two or more circuits, services or communications systems. The DSU III S2W and DSU III S4W are examples of Switched 56 DSU/CSUs.

synchronous

Communications in which the timing is achieved by sharing a single clock. Each end of the transmission synchronizes itself with the use of clocks and information sent along with the transmitted data.

tail circuit

A feeder circuit, which may be digital or analog, that provides an access line to a digital or analog network.

TCP

transport control protocol. The transport protocol offering a connection-oriented transport service in the internet suite of protocols.

trap

An unsolicited message issued by a network device to report an operational anomaly or an alarm condition.

U interface

A twisted-pair subscriber loop carrying an ISDN 160 kbps digital signal between the ISDN central office and the NT1 at the customer premises.

UL

Underwriters Laboratories. A laboratory established by the National Board of Fire Underwriters that tests equipment, materials, and systems that may affect insurance risks, with special reference to fire dangers and other hazards to life.

UL 1459

A UL rating that assures the connected equipment (DSU/CSU) provides protection from current overloads and power line crosses.

V.25 bis

Automatic calling and answering command set including the ability to work with async, bisync and HDLC devices. Provides a small subset of the functions of the Hayes® Standard AT Command Set.

V.34

Latest high-speed standard for full-duplex transmission on two-wire leased and dial-up lines at the following rates: 2.4, 4.8, 7.2, 9.6, 12, 14.4, 16.8, 19.2, 21.6, 24, 26.4, and 28.8 kbps without compression. The maximum connection rate between two V.34 modems is 28.8 kbps. Occasionally, connections occur at 26.4, 24, and 21.6 kbps because line quality differs from one call to the next.

V.FC (V. Fast Class)

Proprietary modulation scheme developed by Rockwell International for data communication speeds up to 28.8 kbps.

VT 100

A non-intelligent terminal or terminal emulation mode used for asynchronous communications.

WAN

wide area network. Any one of a number of technologies providing geographically distant transfer.

Index

Symbols

10baseT 139
10baseT connector 8, 23
 pin assignments 109
1B+D ISDN 2
1s/0s 57
2047 139
4-wire SW56 139
4-wire SW56 DBU card 2
4-wire switched 56 1, 5
511 139

A

agent 4, 139
alarm LED 14
all 1s or all 0s condition 27, 57
ALM 14
answer
 AT command 56
 call 100, 102
answer always 57
anti-stream 47–48
applications 23
 dial backup 26
 LAN with SNMP/TELNET 23
arrows 14
async PPP 1, 8, 11
asynchronous 139
AT commands 29, 33, 75, 111, 112
 phone number 55
AT&T 5ESS 64

AT&T Publication 41458 139
AT&T Publication 62310 140
auto answer 56
auto DBU fail 59
auto restore 58
automatic DBU 56

B

BERT 140

C

call disconnect 100
called unit busy
 status message 100
cancel key 14
cards (options) 10
 installation 10
carrier detect 140
carrier detect (CD) 14, 48
CD 14, 48, 140
check telco 102
clear to send 141
clear to send (CS) 14, 47
clock source 40
clocking 136, 140
compression 62
Config 17
configuration 17, 19
 dial options 53–64
 DTE options 41
 local 36

- management 65
- methods 29
- network options 37
- overview 29
- test options 49–51
- utilities 71
- configuration menus
 - terminal 118
- configuration profiles 129
- configuration remote 36
- connector type 46
- control
 - port 20
- control connector
 - pin assignments 108
- control port 1, 9, 11, 23, 140
- control rate 66
- CPE 140
- CS 14, 47, 140
- CSU 140
- CSU loopback 141
- CTS 140, 141
- customer premise equipment 140
- customer service 6, 7

D

- daily lockout 58
- data communications equipment 141
- data format 46, 99
- data mode
 - status message 102
- data service unit 141
- data set ready (SR) 48, 103
- data terminal equipment 142
- data terminal ready (TR) 48, 103
- dB 141
- DBU
 - AT commands
 - all models 60, 61
 - V.34 card 63
 - DBU answer test 51
 - DBU card
 - pin assignments 106
 - DBU cards 5

- DBU configuration 121
- DBU connection 93
- DBU criteria 57
- DBU interface 9
- DBU line in RDL 101
- DBU lockout options 1
- DBU operation 5
- DBU options
 - all models 56
 - ISDN card 64
 - S4W card 62
 - V.34 card 62–63
- DBU passcode 64
- DBU status 100
- DBU test pattern
 - status message 101
- DCE 141
- DDS 1, 26, 28, 40, 141
- DDS rates 1
- DDS circuit
 - returning to 28
- DDS network status 102
- DDS operation 3
- DDS stress patterns 1-4 141
- diagnostics 136
- dial 19
- dial backup 1, 96
 - ISDN 55
 - mode
 - entering 26
 - status 100
 - status information 100
- dial directory 121
- dial functions
 - activating 95–97
- dial operations 127
- dial options
 - configuration 53–64
 - menu tree 54–64
 - dedicated network type 96–97
 - SW56 network type 95–97
- dial up operation 129
- dialing 100
- dialing options 136
- down arrow 14

DSU 141
DSU configuration
 terminal 120
DSU loopback 141
DSU status 102
DSU to modem interconnect 133
DTE 1, 142
 primary 10
DTE & loop (LL) 84
DTE command option 46
DTE connectors 9
DTE control leads 103
DTE interface 9, 135
DTE only 86
DTE options 41
 AT commands 43, 44, 45
 menu tree 42
DTE rate 45, 99, 135
 same as the network 45
DTE status 103
DTE to loop rate matching 142
DTR 142

E

EIA local loopback (LLB) 51
EIA remote loopback (RLB) 51
EIA-232 2, 9, 10, 142
EIA-232 connector
 pin assignments 107
enter key 13
environment 137
error control 62
ethernet 1, 8, 23
exit test 77
external clock 46

F

fail timer 58
FCC Part 15 of Class A 142
FCC Part 15 of Class B 142
FCC Part 68 142
flow control 62

front panel 13
 alpha entry 69
 illustration/functions 15
 operation 17
front panel commands 29

G

gateway IP address 25, 66
Get community 67
getting TEI
 status message 102
glossary 139
going to DBU 101, 102

H

hang up 97

I

idle 101
in dial backup 101, 103
in-band 142
inactive
 status message 102
included in shipment 7, 8
incoming call 101
installation 7-11
interface 25, 66
INV 35
INVBL 35
INVBM 35
INVCU 35
invert clock 47
INVPS 35
INVPV 35
IP 142
IP address 25, 66
IP filter address 66
IP security 66
ISDN 1, 6, 55, 143
 DBU options 64
 DBU status 100
 dial backup 55

K

keypad 13

L

LAN 5, 23, 29, 143

LAN interface 9

LAN MAC address

viewing 74

LCD window 13

LED

description 14

line interface 136

line requirements 136

LL test from telco 103

LOC 55

local DTE and loop test 143

local loopback 75, 103

local unit

test 82

lockout

weekend/time of day 28

lockout end 58

lockout start 58

loop is normal 102, 103

loop only (RT) 85

loop rate 39

loss of sealing current 27

M

main menu 77

front panel 18

management configuration 122

management functions 65–69

menu tree 65–69

manual commands 72

entering 72

list of 73

menu items

selecting 13

menu navigation 17

menu structure

front panel 18

VT 100 20

MIB 4, 23, 68

modem tail circuit

application 133

multidrop 143

N

national ISDN1 64

network address 40

network data rates 135

network manager 4

network options 37–40

AT commands 38–40

menu tree 39–40

network rate 99

network status 102

network type 40, 62

no DBU installed - DBU status 100

no receive (RX) signal 27, 57, 101

no sealing current 57

no wink from CO 101

not installed 101

NT DMS-100 64

number to dial 56

O

OOS/OOF from net 101

OOS/OOF from telco 103

open loop 101, 103

operating modes 135

operation 13–21, 75–94

during critical times 27

during noncritical times 28

originate 56

originate/answer 56

out of service (OOS) 57

signal 27

out-of-band 143

P

password 20

phone number 55

AT command 55

- pin assignments
 - 10baseT connector 109
 - control connector 108
 - ESP DBU card connector 106
 - primary EIA-232 connector 107
 - primary V.35 connector 108
 - telco connector 106
- pinouts 105
- point-to-point 143
- point-to-point operation 129
- power cord 9
- power switch 9
- power up 8
- PPP 1
- private network master
 - slaved to external clock 143
- product overview 1
- protocol 143
- PSTN 144

R

- RD 14
- RDL 50, 144
- rear panel 9
- receipt inspection 7
- receive (RX) signal 57
- receive data 14
- receiver sensitivity 136
- redial counter 58
- register SPID
 - status message 102
- remote command 11
- remote configuration 40, 118, 144
- remote digital loopback (RDL) 50
- remote loopback 75, 103
- remote V.54 test 144
- request to send (RS) 14
- restore timer 58
- return material authorization (RMA) 6
- RJ-45 144
- router 144
- RS 14
- RS to CS delay 47

S

- scrambler 45, 144
- SDLC 144
- sealing current 57, 145
- secondary channel
 - connection 11
 - services 9
- self test 90
- service 145
- Set community 67
- SHIFT key 13, 17
- SLIP 1, 8, 11, 23
- SLIP/PPP 29
- SNMP
 - 1, 4, 8, 11, 23, 25, 123, 136, 145
 - configuring options 67
 - ethernet LAN application 24
 - network manager 23
 - SLIP/PPP LAN application 24
- SNMP access
 - configuring for 25
- SNMP traps 67
- SNMP/TELNET management
 - application 23
- software revision
 - viewing 74
- specifications 135
- SPID 55
- SR 48, 145
- status 18, 99
 - DDS network 102
 - dial backup mode 100
- status menus
 - terminal 117
- stay on leased 96
- stay on line 97
- subnet mask 25, 66
- SW56 1
- SW56 DBU status 100
- switch type 64
- switched 145
- synchronous 145
- synchronous operation 75
- system contact 68

system location 68
system name 68

T

tail circuit 145
TCP 145
TD 14
telco 9
telco connector 10
 pin assignments 106
telco jack 9
TELNET 1, 20, 23, 25, 113, 136
 configuring for 25
 ethernet LAN application 24
 SLIP/PPP LAN application 24
TELNET options 68
TELNET password 68
TELNET timeout 68
terminal
 connection/operation 20
terminal menu structure 113
test 18, 103
 DTE only 86
 loop only 85
 self 90
 test pattern 89
test commands 82
test from telco 101
test menu 78
test menus 125
test mode manual 14
test options 125
 AT commands 50–51
 configuration 49–51
 menu tree 49–51
test pattern 89
test timeout 50
time/date
 viewing/editing 74
TR 48
transmit clock 46
transmit data 14
trap 145
Trap community 67

trap IP address 67

U

U interface 146
UL 146
UL 1459 146
unit in test
 status message 102
up arrow 14
utilities 71
 menu tree 71
utility configuration 124

V

V.25 bis commands 29, 34, 75, 146
 asynchronous option 35
 bi-sync option 34
 SDLC option 34
V.34 1, 2, 6, 62, 146
 DBU status 100
V.35 2, 9, 10
V.35 connector 11
 pin assignments 108
V.FC 146
VALA 35
VT 100 1, 29, 113, 146

W

wait to redial 59
waiting for call 103
 status message 101
WAN 146
weekend lockout 57
when out of service (OOS) 57