

FrameSaver™ SLV 9820 Quick Reference

Document Number 9820-A2-GL10-00

February 1999

Product Documentation on the World Wide Web

We provide complete product documentation online. This lets you search the documentation for specific topics and print only what you need, reducing the waste of surplus printing. It also helps us maintain competitive prices for our products.

Complete documentation for this product is available at www.paradyne.com.
Select *Service & Support* → *Technical Manuals* → *FrameSaver Frame Relay Devices*.

Select the following document:

9820-A2-GB20

FrameSaver SLV 9820 User's Guide

To request a paper copy of a Paradyne document:

- Within the U.S.A., call 1-800-PARADYNE (1-800-727-2396)
- Outside the U.S.A., call 1-727-530-8623

This Quick Reference helps you access related documents, tells you how to find information about the FrameSaver unit, and shows the menu hierarchy. It also summarizes the configuration options and their default settings.

Getting Started

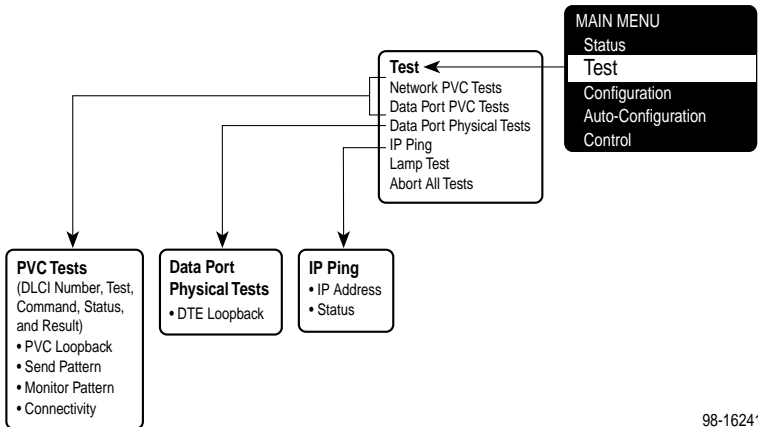
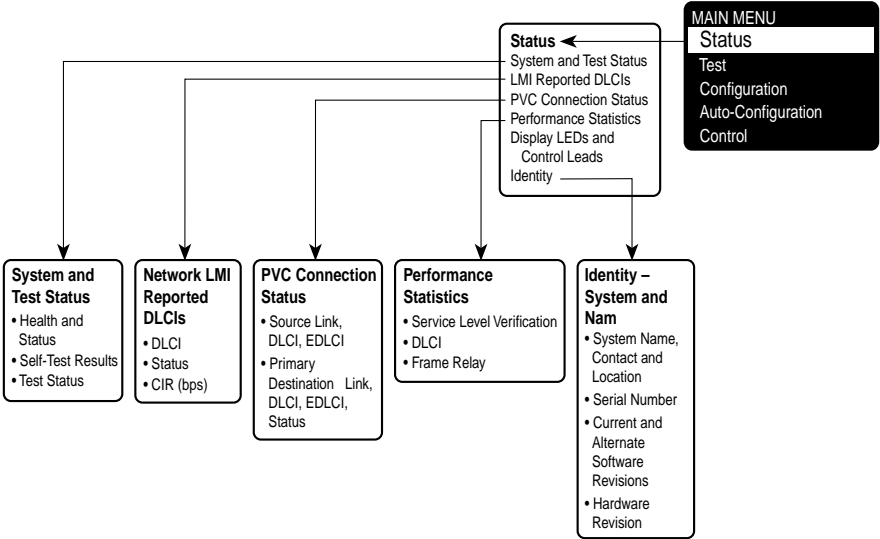
If you have not yet installed and set up the FrameSaver SLV unit, do so now. Refer to the appropriate installation instructions.

Before starting to use the FrameSaver SLV unit, it is recommended that you download the User's Guide so you have access to information about the unit, then print chapters or sections you may want to reference.

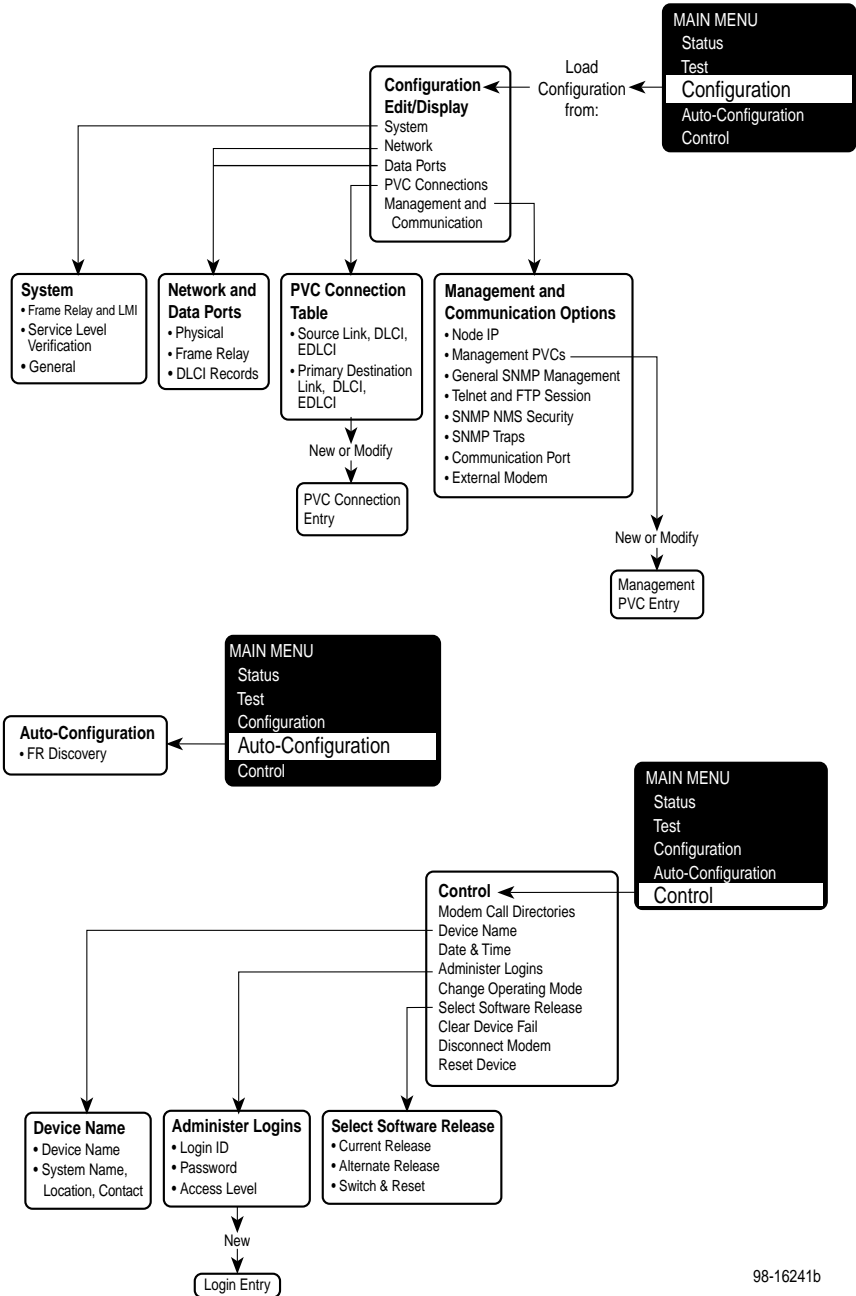
Menu Hierarchy

The Menu Hierarchy shows the organization of the FrameSaver unit's menus and screens. The following pages provide a pictorial view of the menu hierarchy, which helps to navigate the menus and access information.

Menu Hierarchy



98-16241a



Configuration Option Summaries

This section summarizes the configuration options accessed when you select Configuration from the Main Menu. The table references apply to the tables contained in the User's Guide configuration sections in Chapter 9, *Configuration Options*.

- System
- Physical
- Frame Relay
- DLCI Records
- PVC Connections
- Management and Communication

System

Select System Options to configure options applicable to the entire system.

- Frame Relay and LMI
- Service Level Verification
- General

Frame Relay and LMI

Select Frame Relay and LMI to configure the general frame relay options for the system.

Frame Relay and LMI		Table 9-1
Configuration Option	Settings	Default in [Bold]
LMI Behavior	[Independent] , Net1-FR1_Follows_Port-1, Port-1_Follows_Net1-FR1, Port-1_Codependent_with_Net1-FR1	
LMI Error Event (N2)	1, 2, [3] , 4, 5, 6, 7, 8, 9, 10	
LMI Clearing Event (N3)	[1] , 2, 3, 4, 5, 6, 7, 8, 9, 10	
LMI Status Enquiry (N1)	1, 2, 3, 4, 5, [6] , . . . 255	
LMI Heartbeat (T1)	5, [10] , 15, 20, 25, 30	
LMI Inbound Heartbeat (T2)	5, 10, [15] , 20, 25, 30	
LMI N4 Measurement Period (T3)	5, 10, 15, [20] , 25, 30	

Service Level Verification (SLV)

Select Service Level Verification to configure the SLV options for the system.

Service Level Verification		Table 9-2
Configuration Option	Settings	Default in [Bold]
SLV Sample Interval (secs)	15–3600 [60]	
SLV Delivery Ratio	Enable, [Disable]	

General

Select General to configure a timeout period and duration for user-initiated loopbacks and pattern tests.

General		Table 9-7
Configuration Option	Settings	Default in [Bold]
Test Timeout	[Enable], Disable	
Test Duration (min) ¹	1–120 [10]	
¹ Only appears when Test Timeout is enabled.		

Physical

Select Physical to configure the physical characteristics of each interface:

- Network Port
- User Data Port

Network Port

Select Network, then Physical to configure physical characteristics for the network interface (acts as a DTE).

Network		Table 9-4
Configuration Option	Settings	Default in [Bold]
Port Type	E530, [V.35] , X.21	
Port Rate (Kbps) ¹	Model 9820: 64, 128 Model 9820-C: 64, 128, . . . 2048	
Invert Internal Clock	Enable, [Disable]	
Monitor DSR ²	[Enable] , Disable	
Monitor CTS ²	[Enable] , Disable	
Monitor RLSD (Indication)	[Enable] , Disable	
¹ For information only.		
² Does not appear when Port Type is X.21.		

User Data Port

Select Data Ports, then Physical to configure physical characteristics for port connected to the DTE.

Data Ports		Table 9-6
Configuration Option	Settings	Default in [Bold]
Port Type	E530, [V.35] , X.21	
Invert Transmit Clock	[Auto] , Enable, Disable	
Transmit Clock Source ¹	[Internal] , External	
Monitor RTS (Control)	[Enable] , Disable	
Monitor DTR ¹	[Enable] , Disable	
Port (DTE) Initiated Loopback ¹	Local, [Disable]	
¹ Does not appear when Port Type is X.21.		

Frame Relay

Select Frame Relay to configure the Frame Relay characteristics of the following interfaces:

- Network Port
- User Data Port

Frame Relay		Table 9-10
Configuration Option	Settings	Default in [Bold]
LMI Protocol	[Initialize_From_Net1FR1], ² Initialize_From_Interface, [Auto_On_LMI_Fail], ³ Standard, Annex-A, Annex-D	
LMI Parameters	[System], Custom	
LMI Error Event (N2) ¹	1, 2, [3], 4, 5, 6, 7, 8, 9, 10	
LMI Clearing Event (N3) ¹	[1], 2, 3, 4, 5, 6, 7, 8, 9, 10	
LMI Status Enquiry (N1) ¹	1, 2, 3, 4, 5, [6], . . . 255	
LMI Heartbeat (T1) ¹	5, [10], 15, 20, 25, 30	
LMI Inbound Heartbeat (T2) ¹	5, 10, [15], 20, 25, 30	
LMI N4 Measurement Period (T3) ¹	5, 10, 15, [20], 25, 30	
¹ Only appears when LMI Parameters is Custom. ² Only appears for User Data Port interface (this is the default). ³ Default for Network interface.		

DLCI Records

Select DLCI Records to configure the DLCI Records for the following interfaces:

- Network Port
- User Data Port

The Auto-Configuration feature provides automatic DLCI record configuration.

DLCI Records for Each Interface		Table 9-11
Configuration Option	Settings	Default in [Bold]
DLCI Number	16, 17, 18, . . . 1007	
DLCI Type	[Standard], Multiplexed ¹	
CIR (bps)	0– <i>maximum line rate on port</i> [64000]	
Committed Burst Size Bc (Bits)	[CIR], Other	
Bc ²	[0]– <i>maximum line rate on port</i> [64000]	
Excess Burst Size Be (Bits)	This field is blank.	
Be	0–[<i>maximum line rate on port minus 64,000</i>]	
DLCI Priority ³	Low, [Medium], High	
Outbound Management Priority ⁴	Low, [Medium], High	

¹ Only appears for the Network interface.
² Only appears when Committed Burst Size is Other.
³ Only appears for User Data Port interface.
⁴ Does not appear for User Data Port interface.

PVC Connections

Select PVC Connections to manually configure the logical connections between the Network and the User Data Port interfaces. The Auto-Configuration feature provides automatic configuration of PVC connections.

PVC Connections		Table 9-13
Configuration Option	Settings	Default in [Bold]
Source Link ¹	Port-1, Net1-FR1	
Source DLCI ¹	16–1007	
Source EDLCI ^{1, 2}	0–62	
Primary Destination Link ¹	Net1-FR1	
Primary Destination DLCI ¹	16–1007	
Primary Destination EDLCI ^{1, 2}	0–62	
¹ Initially blank when New is selected; no factory default. Tab to field, and press the spacebar. The first valid value appears.		
² Only appears when the DLCI references a multiplexed DLCI (EDLCI).		

Management and Communication

Select Management and Communication to configure the FrameSaver unit so it can be managed by an NMS or Telnet terminal, and to select the appropriate protocols.

- Node IP
- Management PVCs
- General SNMP Management
- Telnet and FTP Sessions
- SNMP NMS Security
- SNMP Traps
- Communication Port
- External Modem (Com Port)

Node IP

Select Node IP to configure support of the IP communication network.

Node IP		Table 9-14
Configuration Option	Settings	Default in [Bold]
Node IP Address	001.000.000.000 – 223.255.255.255, ¹ [Clear]	
Node Subnet Mask	[000.000.000.000] – 255.255.255.255, Clear	
Default IP Destination	[None], COM, PVCname	

¹ First byte (i.e., 001.) cannot be 000, 127 (a reserved number), or greater than 223.

Management PVCs

Select Management PVCs to configure a Management PVC for in-band management. The Auto-Configuration feature provides automatic configuration of Management PVCs on the Network interface.

Management PVCs		Table 9-15
Configuration Option	Settings	Default in [Bold]
Name	ASCII text entry [8 characters]	
Intf IP Address	[Node-IP-Address], Special (address entry: 001.000.000.000 – 223.255.255.255 ¹)	
Intf Subnet Mask	[Node-Subnet-Mask], Calculate, Special (address entry: 000.000.000.000 – 255.255.255.255)	
Set DE	Enable, [Disable]	
Primary Link ²	Net1-FR1, Port-1, Clear	
Primary DLCI	16–1007	
Primary EDLCI ³	0–62	
Primary Link RIP ^{2,3}	None, [Standard_out], [Proprietary]	

¹ First byte (i.e., 001.) cannot be 000, 127 (a reserved number), or greater than 223.
² Proprietary is the default on management links on multiplexed DLCIs. Standard_out is the default on management links on standard DLCIs.
³ Only appears when the DLCI references a multiplexed DLCI (EDLCI).

General SNMP Management

Select General SNMP Management to configure the FrameSaver unit so it can be managed as an SNMP agent.

General SNMP Management		Table 9-16
Configuration Option	Settings	Default in [Bold]
SNMP Management	[Enable] , Disable	
Community Name 1	ASCII text entry, [Public] , Clear	
Name 1 Access	[Read] , Read/Write	
Community Name 2	ASCII text entry, [Clear]	
Name 2 Access	[Read] , Read/Write	

Telnet and FTP Sessions

Select Telnet and FTP Sessions to configure access to the FrameSaver unit through Telnet or FTP, and to determine whether security will be required.

Telnet and FTP Sessions		Table 9-17
Configuration Option	Settings	Default in [Bold]
Telnet Session	[Enable] , Disable	
Telnet Login Required	Enable, [Disable]	
Session Access Level	[Level-1] , Level-2, Level-3	
Inactivity Timeout	[Enable] , Disable	
Disconnect Time (Minutes) ¹	1–60 [10]	
FTP Session	[Enable] , Disable	
FTP Login Required	Enable, [Disable]	
FTP Max Receive Rate (kbps)	Model 9820: 1– [128] Model 9820-C: 1– [2048]	

¹ Only appears when Inactivity Timeout is enabled.

SNMP NMS Security

Select SNMP NMS Security to configure access to the unit.

SNMP NMS Security		Table 9-18
Configuration Option	Settings	Default in [Bold]
NMS IP Validation	Enable, [Disable]	
Number of Managers	[1] –10	
NMS <i>n</i> IP Address	[001.000.000.000] –223.255.255.255 ¹ , Clear	
Access Type	[Read] , Read/Write	

¹ First byte (i.e., 001.) cannot be 000, 127 (a reserved number), or greater than 223.

SNMP Traps

Select SNMP Traps to configure desired SNMP traps and dialing out when SNMP traps occur.

SNMP Traps		Table 9-19
Configuration Option	Settings	Default in [Bold]
SNMP Traps	Enable, [Disable]	
Number of Trap Managers	[1] –6	
NMS <i>n</i> IP Address	001.000.000.000 –223.255.255.255 ¹ , [Clear]	
Destination	[Default] , COM ² , <i>PVCname</i>	
General Traps	Disable, Warm, AuthFail, [Both]	
Enterprise Specific Traps	Enable, [Disable]	
Link Traps	Disable, Up, Down, [Both]	
Link Traps Interfaces	Network, Ports, [All]	
DLCI Traps on Interfaces	Network, Ports, [All]	
RMON Traps	[Enable] , Disable	
Trap Dial-Out	Enable, [Disable]	
Trap Disconnect	[Enable] , Disable	
Call Retry	Enable, [Disable]	
Dial-Out Delay Time (Min)	1–10 [5]	
Alternate Dial-Out Directory	[None] , 1–5	

¹ First byte (i.e., 001.) cannot be 000, 127 (a reserved number), or greater than 223.
² Only appears when Port Use in the Communication Port options is set to Net Link.

Communication Port

Select Communication Port to configure the FrameSaver unit's COM port.

Communication Port		Table 9-20
Configuration Option	Settings	Default in [Bold]
Port Use	[Terminal] , Net Link	
Data Rate (Kbps)	9.6, 14.4, [19.2] , 28.8, 38.4, 57.6, 115.2	
Character Length	7, [8]	
Parity	[None] , Even, Odd	
Stop Bits	[1] , 2	
Ignore Control Leads	[Disable] , DTR	
Login Required ²	Enable, [Disable]	
Port Access Level ²	[Level-1] , Level-2, Level-3	
Inactivity Timeout ²	[Enable] , Disable	
Disconnect Time (Minutes) ²	1–60 [10]	
IP Address ³	001.000.000.000–223.255.255.255 ¹ , [Clear]	
Subnet Mask ³	[000.000.000.000] –255.255.255.255, Clear	
Link Protocol ³	[PPP] , SLIP	
RIP ³	[None] , Proprietary, Standard_out	

¹ First byte (i.e., 001.) cannot be 000, 127 (a reserved number), or greater than 223.
² Only appears when Port Use is Terminal.
³ Only appears when Port Use is Net Link.

External Modem (on Com Port)

Select External Modem (on Com Port) to control call processing for an external device attached to the FrameSaver unit's communications port.

External Modem (on Com Port)	
Configuration Option	Settings Default in [Bold]
External Modem Commands	[Disable] , AT
Dial-In Access ²	[Enable] , Disable
Alternate IP Address ²	001.000.000.000–223.255.255.255 ¹ , [Clear]
Alternate Subnet Mask ²	[000.000.000.000] –255.255.255.255, Clear

¹ First byte (i.e., 001.) cannot be 000, 127 (a reserved number), or greater than 223.
² Does not appear when External Modem Commands is Disable.

Warranty, Sales, Service, and Training Information

Contact your local sales representative, service representative, or distributor directly for any help needed. For additional information concerning warranty, sales, service, repair, installation, documentation, training, distributor locations, or Paradyne worldwide office locations, use one of the following methods:

- **Via the Internet:** Visit the Paradyne World Wide Web site at <http://www.paradyne.com>. (Be sure to register your warranty there via Service & Support.)
- **Via Telephone:** Call our automated system to receive current information by fax or to speak with a company representative.
 - Within the U.S.A., call 1-800-870-2221
 - Outside the U.S.A., call 1-727-530-2340

Document Feedback

We welcome your comments and suggestions about this document. Please mail them to Technical Publications, Paradyne Corporation, 8545 126th Ave. N., Largo, FL 33773, or send e-mail to userdoc@eng.paradyne.com. Include the number and title of this document in your correspondence. Please include your name and phone number if you are willing to provide additional clarification.

Trademarks

All products and services mentioned herein are the trademarks, service marks, registered trademarks or registered service marks of their respective owners.

Patent Notification

FrameSaver SLV products are protected by U.S. Patents: 5550700 and 5654966. Other U.S. patents pending.